

Volume: 2014

Number:

1



ACUPUNCTURE and NATURAL MEDICINE



**MEDICAL SOCIETY OF
NATURAL MEDICINE**

ISSN 1339-4703



Acupuncture and Natural Medicine

Editorial

Dear readers, ladies and gentlemen, Advent candles burned out since a long time, Christmas carols faded and there is a New Year 2014 spreading before us like a blank sheet of paper. According to the Chinese zodiac the water Dragon year ended on 30.1.2014, which was favorable for reflection and planning. The wooden Horse lunar year began on 31.1.2014. This year we can expect fulfillment of plans, project implementation, a great bustle and movement in each area. In this expected hectic it is necessary to find an own island of peace and wellbeing. We will be glad if our magazine contributes to do so- beside its professional addition. On behalf of the editors of the magazine I wish the year 2014 to be successful, peaceful and harmonious for you, both in the private and in the work area.

In this issue we continue our series "Acupuncture little differently." In an article titled "Some mechanisms of acupuncture and TST" G. Solar, MD, PhD describes mechanisms of acupuncture on the basis of structured fields that carry unlimited amounts of information. He provides a new insight into the diagnostic possibilities of acupuncture and in this context he also introduces important principles and unique diagnostic method of TST.

The clinical part of this issue is focused primarily on the diagnostics. T. Mochnáč, MD, PhD introduces a new perspective on the objectification of meridian blockade using the TST test and other examination methods in the article "Diagnosis of a meridian blockade in acupuncture".

PaedDr. Z. Solárová, PhD deals with theoretical principles and assessment of acupuncture questionnaire by Korngold and Beinfeld in her modification in the article "Theoretical foundations of the process of diagnosis in the questionnaire MKBD - S". She analyzes its significant benefit in the diagnosis of the patient.

Prof. L. J. Slatinskaja, PhD presents the first part of a four-part series on Russian natural medicine in the article "The biophysical basics of natural medicine". Russian natural medicine is a little different than the Slovak view on natural medicine. Therefore, such an introduction of Russian natural medicine is very useful for further cooperation in the future.

In the article "A new approach to evaluate the physiological properties of honey" Mgr. K. Bilíková, PhD presents more recent methods of determining the quality of the honey using bee proteins and possible applications of honey therapy.

"Window into acupuncture thinking" belongs to views of acupuncturists in terms of their field of expertise. K. Loncková, MD presents some possibilities of using the knowledge of acupuncture to get a new perspective on a psychiatric patient.

In the section devoted to interdisciplinary view you can read the paper "Water as geofactor of environment and its impact on human beings" by Prof. Dr. F. Baliak, PhD. et al that was published in the XVII. Medical congress of natural medicine. Collective of authors assess the crucial importance of water for the environment and health.

As conclusion, M. Miklósová, MD reports in detail on the course of the XVII. Medical congress of natural medicine with interdisciplinary participation in October last year.

Our magazine has the ambition to develop and deliver the latest knowledge of acupuncture and natural medicine in 2014. We want to address the theoretical basis, clinical work and research and – of course – a broad interdisciplinary scientific discussion. The Scientific Council will continually expand adding experts from around the world and working in all clinical and theoretical areas of natural medicine. We are honored to welcome world-recognised experts (Prof. Slatinskaya Larisa Yurevna, prof. Kikuchi Yamaguchi, prof. Chi-Chung Peng, Dr. med. Jean-Marc Kespi, Dr. Stângaciu Stefan, prof. Park Wan Su and Dr. Med. Folker Meissner) to the Scientific Council.

We expect acupuncture and natural medicine to further develop in a view of latest knowledge from around the interdisciplinary spectrum. Even through our magazine we will encourage broad international cooperation and application of new knowledge in the

prevention, clinical work and research. XVIII. Medical Congress of natural medicine and other scientific and professional events are already in preparation. One milestone will be the first electoral meeting of Medical association of natural medicine, which will be the first one after transition and adoption of new Articles of MSNM.

A year rich in new impulses and inspirations awaits us. I believe it will be a year of meaningful work as well.

I wish you a pleasant time not only during reading our magazine.

Soňa Sázelová, M.D.

Chief Editor



EDITORIAL OFFICE

CHIEF EDITOR

Soňa Sázelová, M.D.

EDITORIAL BOARD

Soňa Sázelová, M.D.

Eva Baumann, M.D.

Martina Lehocká, M.D.

Solijon Mamarsulov, M.D.

Magdaléna Miklósová, M.D.

Katarína Loncková, M.D.

Mgr. Valentín Dikarev

TECHNICAL EDITOR AND GRAPHIC DESIGN

Mgr. Stanislav Gajdoš, MBA

CONTACTS

E-mail:

office@naturalnamedicina.com

URL:

www.naturalnamedicina.com

Address:

Ivanská cesta č. 23
82104 Bratislava



SCIENTIFIC COUNCIL

Prof. RNDr. František Baliak, PhD.
*STU Bratislava, Civil Engineering,
Department of Geotechnics*

RNDr. Katarína Bíliková, PhD.
*Dpt. of Molecular Apidology,
detached branch of Institute of Forest Ecology, Bratislava*

Doc. Ing. Ján Brindza, CSc.
*Slovak University of Agriculture
Institute of Biodiversity Conservation and Biosecurity*

Juraj Gajdoš, M.D.
*General Practitioners for Adults and Acupuncturist,
N.z.z. Trnava*

Doc. RNDr. Vojtech Gajdoš, CSc.
Geophysicist, Bratislava

Prof. Štefan Galbavý, M.D., DrSc.
*Institute of Laboratory methods,
St.Elisabeth University of Health and Social sciences,
The St.Elisabeth Cancer Institute Bratislava*

Jean-Marc Kespi, M.D.
*Honorary President of the French Association
of Acupuncture (AFA)*

Doc. RNDr. Miloslav Khun, CSc.
*UK Bratislava, Faculty of Natural Sciences,
Department of Geochemistry*

Dr. Pil-Gun Kim, K.M.D. PhD ,
*Korean Medicine Association, Seoul
president*

Prof. Ing. Ján Košturiak, PhD.
*Managing Director, IPA Slovakia,
Professor Tomas Bata University Zlin*

Ing. Eva Kutejová, CSc.
*Dpt. of Biochemistry and Structural Biology,
Institute of Molecular Biology, SAV, Bratislava*

prim. Anna Loskotová, M.D.
*chief of clinic of physiotherapy - SALVE Centre,
Vysoke Myto, CZ
MASARYK University in Brno,
Clinic of Burns and Reconstructive Surgery,
University hospital in Bohunice, CZ*

Folker Meissner, M.D.
*Chairman of the German Academy of Energy
Medicine and Bioenergetics (DAEMBE)
Clinic for Holistic Medicine Dr. Folker Meissner*

Teodor Mochnáč, M.D., PhD.
*Akupunktum,
Center of acupuncture and diabetic foot, Nitra*

Prof. Marián Mokaň, M.D., Dsc., FRCP Edin
*Department of Internal Medicine I.,
Jessenius Faculty of Medicine
Comenius University and University Hospital Martin*

Prof. Chi-Chung Peng
*Associate Professor & Chairman
National Formosa University, Department of Biotechnology
Huwei, Yunlin, Taiwan*

Prof. Larisa Yurevna Slatinskaya
*Doctor of science in the Russian Academy of Natural Sciences,
professor, Doctor of natural medicine,
Member of Russian Scientific Organization of natural medicine,
Academician of Westeuropean Academy of Science
and Culture e.V.,
Director of centre of Natural Medicine "Life Bionomics", Russia*

Doc. Jana Slobodníková, M.D., CSc. h.Prof.
*Faculty of Health, KLVM
Alexander Dubcek University of Trencin*

prim. Gustáv Solár, M.D., PhD.
Center of Acupuncture, Bratislava

Zlatica Solárová, M.P., PhD.
Center of Acupuncture, Bratislava

Prof. Miron Šramka, M.D., DrSc.
*St.Elisabeth Cancer Institute, Bratislava
Department of stereotactic radiosurgery.
St.Elisabeth University of Health and Social Sciences,
Bratislava*

Dr. Stefan Stângaci
*President of Apitherapy Consulting & Trading International Ltd.
President of the Romanian and German Apitherapy Societies.
Secretary General of the International Federation of Apitherapy*

Prof . Park Wan Su
*The Chief Vice President of AKOM
(the Association of Korean Medicine)
Professor, Dept. of Pathology, College of Korean Medicine,
Gachon University, Republic of Korea*

Kikuji Yamaguchi, PhD.
*Company Chairman & CEO
Yunnan Agricultural University, Kyobashi Chuo-ku, Tokyo*

Jeong Yeonil M.D.
*Korean Medicine Association, Seoul
Director for Foreign Affairs*



Table of Contents

Acupuncture Little Different

Selected Mechanisms of Acupuncture and TST	5
Gustáv Solár, M.D., PhD.	

Clinic and Research

Diagnostics of Meridian Blocks in Acupuncture	15
Teodor Mochnáč, M.D., PhD.	
Biophysical basics of natural medicine	20
Prof. Larisa Yurevna Slatinskaya	
Theoretical Basis for the Diagnostic Process in the MKBD-S Questionnaire (Korngold-Beinfeld Questionnaire Modified by the Author of the Article)	32
Zlatica Solárová, M.P., PhD.	
New approach for evaluation of physiological properties of honey	39
RNDr. Katarína Bíliková, PhD.	

An Insight into the Acupuncture Thinking

Acupuncture in psychiatric practice	46
Katarina Loncková, M.D.	

Interdisciplinary Insights

Water as geological factor of the environment and its influence on humans	50
Prof. RNDr. František Baliak, PhD.	
Mgr. Martin Ondrášek, PhD.	
Mgr. Martin Brček, PhD.	

Reports

Report from the 17 th Medical Congress of Natural Medicine with Interdisciplinary Participation	54
Magdaléna Miklósová, M.D.	
Instructions for Authors	58



Selected Mechanisms of Acupuncture and TST

Gustáv Solár, M.D., PhD.

Abstract

In this part of the publication “Acupuncture differently” the author describes mechanisms of acupuncture based on structured fields which carry a practically unlimited amount of information and represent a site of interactions. To refer to active points, meridians, microsystems, projections and other structures the author uses a common phrase, i.e. “system of acupuncture”. This system is a physical manifestation or rather a consequence of these fields' activity. Hence, the theory of similarity and other mechanisms of acupuncture may be clarified. The author assumes the existence of a “gnostic field” as a material or energo-informational substrate of the Cosmic program.

In the second part, the author describes the Tactile Solar Test as a method used to diagnose complex malfunctions of the acupuncture system. Furthermore, he introduces a phrase “cardio-cerebral disbalance”.

Keywords: acupuncture, binary code, diagnostics, energo-informational fields, morphic field, Planck time, Planck length, TST, structured field, gnostic field, cardio-cerebral disbalance, system of acupuncture

Introduction

Acupuncture is oftentimes presented as a part of the traditional Chinese medicine, or as an alternative healing method, consisting mainly of the application of thin needles into acupuncture points. These assertions keep reappearing in most acupuncture textbooks and guidebooks, which generally do not differ from one another, save for some rare exceptions. If we are to see acupuncture as a branch of medicine, then we need to learn about its theoretical basis, research, methods, diagnostics, prevention and finally its treatment. Naturally, almost every medical field has its history and tradition.

If we are to accept the fact that acupuncture as a method was preserved in China (new information shows that elsewhere too), then we should also accept assertions about its origin. According to Chinese tradition, these assertions derive from emperors and old “masters”. A deeper analysis of history interpreted in this way naturally raises questions and doubts. When researching the history of acupuncture, we may often stumble upon such formulations as “the first mentions of acupuncture...”. What is hiding behind this cliché? What is relevant as the so-called “first mention”? It usually refers to available literary sources. It is a kind of information that has been put down in writing and preserved or discovered in some form. After all, in case of the



aforementioned tradition or empirical knowledge, we base our assumptions on written records too.

Material and methodology

We assess some available facts from the history of acupuncture and compare their mutual relations to other relevant cultures. We interpret the relations and connections in the system of acupuncture based on quantum physics and structured fields. Likewise, we use these as a theoretical basis in our attempt to interpret the acquisition of key information in the past. We summarize our over twelve years' experience with the assessment of tactile sensitivity using the TST method and the options of diagnosing the complex systems of acupuncture.

Notes on history

Let us have a closer look at the discussed issues. The oldest known source – The Book of Changes I Ching is believed to have been authored by the mythical emperor Fu-Hsi, who lived in 2852 to 2738 B.C. Hence, he was born 4866 years ago and lived 114 years. He had a supernatural revelation, in which 8 trigrams appeared to him. These later expanded into 64 hexagrams forming the TAO road, i.e. the Cosmic pattern. Even if we accept the peculiarities of the Chinese language, there is no doubt that these trigrams and hexagrams are described in a linear binary code (a full line and an interrupted line). Where did the binary code, which is nowadays used in computer languages, come from? The binary code uses a binary number system, with one number standing for

one bit in informatics. Potentially any information may be “translated” into binary code. Even if we accept the “supernatural” origin of this information, we do not know what its “revelation” is meant to express. That means it is not known how this information was delivered. Besides, this source does not say a word about its originator. Neither does it say how Fu-Si understood it. The history records numerous cases of sudden acquisitions of information, which was proved accurate. Therefore, we cannot dismiss a supernatural acquisition of timeless information which is so ahead of its time. Such a way of information acquisition is not to be found only in the Chinese culture, but practically in all the other relevant cultures.

However, what is important about this information? A diagram of eight trigrams (pa-kua) is arranged according to cardinal points, showing relations which came to form the basis of the Chinese philosophy. It also represents the duality of YANG and YIN as well as the arrangement into triplets. A trigram represents duality, but at the same time it conveys that every phenomenon has its initiatory, peak and transitory phase. A trigram is a graphical representation of a triplet, known in biological sciences. In Chinese tradition it symbolizes both natural power and some human characteristics. The arrangement of cardinal points – as we shall see – changes dynamically. To each trigram we may assign the appropriate meridian. Why are there eight of them, when there are twelve body meridians? Where are the remaining four? Referring to only eight cardinal points would be a much too



simplified interpretation. In this context, it is interesting to note that in informatics eight bits actually form one byte. In Fu-Hsi's diagram (He-tu diagram) **the trigrams are arranged symmetrically, which reflects the essential basis of all things (I Ching).**

The rest of this information concerns the five elements the arrangement of which is – to use contemporary language – fractal. In the following parts of this publication we shall see that this piece of information is crucial and is not merely the result of the interpretation of the Traditional Chinese medicine. This information is so complex and so utterly not corresponding to the given time that the probability that it is merely the result of empirical knowledge and observations is practically zero.

After nearly 1600 years comes another “enlightened man” – King Wen, the founder of the Zhou (Chou) dynasty (1150-249 B.C.). King Wen, who is assigned the introduction of the 64 hexagrams, had a vision of trigrams arranged in dynamic order, which reflected the functioning of structures in human beings and things. Here, the cardinal points are assigned to individual trigrams in a different way. The supernatural acquisition of information in this case is analogical to the case of the emperor Fu-Hsi. The only difference is the appearance of another level of information which is already known (the Luo-Shu diagram). The supernatural acquisition of information seems to stop here. Further development is most probably based on philosophical theories. Namely, how can we explain the fact that there were only two

diagrams? Based on mathematical logic, it is clear there must be at least two more. We have derived these two missing diagrams and called them systems **S1 and S2**. We shall analyze them in more detail in the following parts of this publication. Also the assignment of cardinal points to individual trigrams is different here. Some details were already mentioned in the previous parts and we shall discuss them also later. The derivation of diagrams is of utmost importance for the entire philosophy of acupuncture and interpretation of findings.

In conclusion we may say that the appearance of the basic information that forms the theoretical frame of acupuncture was a quantum leap. This information appeared in other cultures of that time too (to be discussed later). In the Old China, a new healing method originated. It was called chen chiu, nowadays known as acupuncture. Its theoretical base, however, is not only Chinese, nor does it concern merely medicine.

Notes on physics

Let us move some thousand years in time and have a look at the problem from the viewpoint of physics in the light of today's science. Let us start from the very beginning – the Big Bang. Retrograde analysis of this phenomenon reveals some facts that are important for acupuncture too. One of the first things to consider are its retrolimits, i.e. the limitations of “reconstruction” based on the laws of physics. It is the retrospective virtual modeling of “shrinking” of the Universe from its current dimensions to the state at the time of the Big Bang. These limits are



the so-called Planck units, which physicists sometimes call Divine units. German physicist, Max Planck, calculated and indicated the limits of validity of the known laws of physics. In a time under 10^{-35} seconds (Planck time) and at a size under 10^{-35} meters, the space and time lose their characteristics of a continuum and in fact cease to exist. From the physical point of view, according to Heisenberg's uncertainty principle everything smaller than 10^{-35} meters would carry so much energy that it would collapse into the black hole (McCraty, 2004). It means that the expansion of Universe from the moment of the Big Bang from size zero to “the size” 10^{-35} meters was practically nothing, there was neither time, nor space. That is the moment of Creation when “The word became flesh” and materialized. **The Word** – the initial information through which “nothing” became “everything”. The word of God becomes a piece of information, which carries everything in itself. The **first omnicontaining field** is formed. This field gradually transforms into further fields which are more specific and more structured. The information and later energy form the primary base of all matter. The whole organism and each of its parts has its own field and fields providing incessant exchange of information in the whole complexity of Being. Everything is interconnected through the fields and the flow of information. According to E. Fredkin the whole universe functions under the surface of things (Fredkin, 2009). Subatomic particles and objects which they form are therefore only schemes of information in constant motion. In other words – the energo-

informational processes are present in the whole material world. These processes are examined by natural medicine in medical relations and necessitate a complex interdisciplinary study. Without their examination and study of their share in the etiopathogenesis no complex diagnostics or treatment is possible.

The energo-informational system of an organism is primarily formed through the information fields as well as through morphic fields as described by R. Sheldrake (Sheldrake, 1988). Active points, meridians and microsystems are dynamic manifestations of the fields of an organism and individual organs. Points and meridians are expressions or rather “consequences” of fields, which have their fixed arrangement and cannot be “analyzed”. They manage the body structures – by affecting them we affect the organism. They carry information – by examining them, we gain information about the organism in the broadest terms.

Let us assume that in Planck's measurements there was the primary omnicontaining field which over time got structured and divided into further fields, e.g. morphic fields etc. It is indisputable today that the whole development is managed according to a certain “program” and does not proceed by the trial and error method. In such a case the universe would have to be statistically several thousand times older than it is. This, however, means that the whole dominant direction of development must be “stored” at the fields' level. It is the basic program, **the knowledge** which apart from the basic information guarantees corrections of other fields



to prevent digression from the basic program. It is an ergo-informational expression of the primary program and absolute knowledge. This managing field of knowledge or **gnostic field** is a hypothetical field outside the known laws of physics.

We may tentatively define it as a part of the initial omnicontaining field, which remains unchanged and determines all the other fields that are derived from the initial omnicontaining field. As an indirect evidence we may mention the insights through which individuals (e.g. Fu-Hsi, Wen) as well as prophets and visionaries in all relevant cultures acquired timeless information in “a supernatural way”. “My ways are not your ways,” says the Creator, and this field remains outside our possibilities of systematic examination and our knowledge as a whole. Referring to it could naturally be misused to “authorize” mistakes, but the gnostic field cannot be affected in any way. I am aware of the fact that the existence of the gnostic field will not be accepted unequivocally, but I do not see any argument that would refute its existence either.

Microsystems are more complex, fixed structured manifestations of fields, having more forms of projecting organisms (“anatomic” type, cross type, circular type, rotary type, projection type). They form a scheme or a model and express multidimensional manifestations of a field or fields. They are not morphological structures, they are merely projected on these. Therefore, they offer a multidimensional image about an organism. We may affect them e.g. through acupuncture treatment. With the help of

a complex acupuncture examination we may get a complex image about the ergo-informational state of an organism. This complex image has a somatic (biochemical-morphological), ergo-informational as well as a psychoregulative component. Therefore, acupuncture or the theoretical postulates on which it is based, forms the basic principles of natural medicine.

Possibilities of diagnostics

Active points, meridians, diagrams or projections of functions or even the whole ergo-informational body field are the primary places, where permanent interactions occur, interact and leave traces. The outcome is complex, multidimensional and dynamic, determining the functionality of an organism. It is oftentimes difficult to orientate oneself in these multilevel projections. Let me illustrate the point on the index finger. It is a location of projection of meridians of the large intestine, of degeneration of the nerve system, 6 byol meridians of the Su-Jok hand, the whole upper extremity etc. And this is just one example. It can be said that it is a place where the fields of each of these structures overlap and interact with the common field of the index finger. Thus, a mutual exchange of information and many other ergo-informational and biochemical-morphological processes are enabled. Each structure is a “consequence” and a proof of activity of these fields and their material correlate. How to orientate oneself on such a small area?

One of the possibilities for the therapist is to “program himself” for the projection which he is



examining. That means the therapist “chooses” one of the morphological projections on the finger, focuses on one field or a part of it and gets a limited conclusion. A complex examination, however, necessitates focusing on the whole field of the finger. One of the complex manifestations or “consequences” of the fields is the tactile sensitivity of skin. Changes in the sensitivity appear with every inhomogeneity in a field, malfunction of a meridian, microsystem, projection etc. The intensity of changes in the tactile sensitivity corresponds to the intensity of inhomogeneity in a field (fields) and it can be assumed (based on clinical experience) that also to the intensity of a malfunction of the structures involved. The assessment of tactile sensitivity is a relatively complex assessment of structures that we may call – in a simplified way – “the system of acupuncture”. The tactile sensitivity is very individual, therefore also the examination depends on the concrete individual. It is important to use such an instrument and technique which enables the most relevant result. The most determining factor is the mutual relation of results, not their absolute expression. The endless dynamics and variability of fields and their individual relation is crucial for the state of the system and its diagnostics. This variability and dynamics manifest themselves on their “material” substrate – “the system of acupuncture”.

The groundbreaking knowledge about the precedence of informational heart circle over the energo-informational brain circle and other systems in an organism (McCraty, 2004)

correlates in the system of acupuncture. To illustrate our point we may summarize it as follows. Information from the outside gets primarily into the energo-informational heart circle, which is the main generator of rhythms and information for the whole body. The energo-informational heart circle can identify this information before it manifests in a tangible way. For example the heart reacts to the projected image before it projects in reality. It is emotional information, which gets to the energo-informational brain circle only later. What is necessary for an adequate reaction and information processing is the cardio-cerebral harmonization. This fully corresponds to the traditional Chinese characteristics of inner harmful substances (emotions). We now have the initial knowledge about the clinical image of a cardio-cerebral disbalance and possible ways of its treatment through acupuncture. This is the basic knowledge which requires further verification. What plays a great role in its diagnostics is the TST diagnostics and pulse diagnostics. In this context it may be appropriate to re-characterize the pulse diagnostics. It is a technique which diagnoses the pulse wave on a radialis. Speaking of the cardio-cerebral communication, it primarily refers to the diagnostics of the energo-informational heart circle (including the somatic manifestations). To put it simply – the pulse diagnostics informs us “what the heart thinks about it”. We shall get back to this topic in the following parts of this publication.



TST (Tactile Solar Test)

Based on manifestations of the tactile sensitivity we have worked out methods of a tactile examination of individual meridians, microsystems and projections (Solár, 1999). These methods are still under development. Since 1998 several acupuncturists in Slovakia have been trained to use these methods. They have confirmed the high affectivity of the tactile examination and therefore, it has become a part of our accredited training courses (Tarbajovská, 2010). This diagnostics has accelerated the acquisition of new knowledge, which is as useful in the experimental research as in everyday praxis (Gajdoš, 2010). It enables delivering the highest effect while using the minimum number of needles. TST has become part and parcel of the majority of significant publications on acupuncture by Slovak authors and not only within the framework of the LSNM events (Mochnáč, 2010). It has enabled us to find and assess the dynamics of several microsystems and projections which until then had been unknown.

The use of this technique both proves and refutes several well-known assumptions. The theory of the so-called near and distant points – as we may expect – is not proved, neither is the thesis about the so-called points of general effect. What this technique shows is the individual variability of each patient. Also, this method confirms that no examination may be repeated without TST indicating the points used. Therefore, the repeated series of identical sets of points are not relevant in the examination.

The active cooperation with a patient and the possibility of instant verification of the correct examination are a great advantage of this method. Moreover, it enables us, at least partially, to learn about and understand the mutual interactions of individual systems of acupuncture. This examination can be used to prove them. It is only natural that the examination of tactile sensitivity has its limitations. Therefore, we are still working on its perfection. It forms a substantial part of the complex acupuncture examination, but it is optimal to use other diagnostic methods as well. The patient's "story" is still crucial and remains to play the key role in the etiopathogenesis of the illness.

Discussion

Looking back in history we may find some significant relations. In 17th century chronicles *Annalis veteris testamenti*, a *prima mundi origine deducti* (the original copy may be found in Public Library in Lyon) Anglican archbishop James Ussher calculated that the Creation of the world began on 23 October 4004 B.C. according to the Julian calendar, i.e. 6018 years ago. He based his calculations on the knowledge of Johannes Kepler. The scientific and religious authorities accepted this calculation until 19th century. Naturally, this chronicles cannot be considered a scientific evidence. However, based on the period literary sources it reveals some interesting connections. According to the Judaist calendar we are living in the year 5774. The Egyptian civilization (the Old Empire) dates back to 3150 B.C., i.e. 5164 years ago. The Mayan began their



calendar on 4 Ahau 8 Cumbu (the initial date), i.e. 5128 years ago. Fu-Hsi, the author of the Book of Changes, lived in 2852 – 2738 B.C., which means he was born 4866 years ago.

The traditional Chinese medicine, i.e. its sources, is sometimes considered the oldest in the world. As we have shown, it is not quite so true. The mentioned great cultures are at least as old, if not even older. The knowledge of the other relevant developed civilizations all over the world is roughly as old, or at least comparably old as the Chinese knowledge and equally important for building the acupuncture system. All these cultures had certain knowledge – judging from our current information – which they could not have acquired through empirical science or research. All this information appeared almost at the same time, but it seems that only in China did this knowledge build the foundations of a therapeutic and diagnostic system. Apart from different means of expression and sets of symbols, its theoretical basis is in fact analogical in all cultures. It seems that the period around 5000 years ago was the beginning of development of all the relevant cultures in the world. It also seems that all these cultures acquired some of the information, from the historical point of view, almost simultaneously from the gnostic field, although in a fragmentary and symbolic form. We may speculate why it all happened this way. The symbols – pentagram, pyramid, Sefer Jecira, etc. express analogical information at different levels and have their projections on the body. All these symbols may be used as models of the system of acupuncture,

but we shall get back to this topic later. For the time being we may state that the whole system of acupuncture is universal and multidimensional.

The quantum physics offers a quantum fields theory, which helps clarify relations and connections in acupuncture and enables its further development. It would benefit acupuncture if more doctors – acupuncturists were interested in it. Namely, the clinical consequences of quantum physics are quintessential. The new knowledge it brings is useful not only for acupuncture. Its study and research without close interdisciplinary cooperation is unthinkable.

Conclusion

To understand the individual components of the system of acupuncture, including “the theory of similarity” and the complex effect of acupuncture we need to base our understanding on the theory of structured fields – including the gnostic field. This fact is not accepted in biological sciences only. It shows that the material manifestations are secondary, i.e. they are a direct consequence of these fields' activity. In acupuncture diagnostics the tactile skin sensitivity and the mutual relation of sensitivity on different locations on the body constitute an important consequence of these relations and interactions. The TST method, which has been tested in everyday praxis for over 10 years now, may greatly benefit the study of the discussed issues. Likewise, the study of informational cardio-cerebral relations and connections may benefit the theory and praxis of acupuncture and



medicine as such. Further research and interdisciplinary cooperation will be needed to discuss these issues in more detail.

Gustáv Solár, M.D., PhD.

President of the Medical Society

of Natural Medicine

Centrum akupunktúry

Ivánska cesta 23, Bratislava

Slovakia

www.akupunktura.sk

e mail: solar@akupunktura.sk

Bibliography

1. Fredkin, E. 2009. *Ed Fredkin and the universe as a computer*. [Online] august 2009. [Dátum: 3. január 2014.] <http://boingboing.net/2009/08/13/ed-fredkin-and-the-u.html>.

2. Gajdoš, J. 2010. *Limity akupunktúry, limity akupunkturistu*. [Zborník XIV. Lekársky kongres naturálnej medicíny] Košice : Lekárska spoločnosť naturálnej medicíny, 2010. ISBN 978-80-970500-0-9.

3. McCraty, M. et al. 2004. Electrophysiological evidence of intuition: Part 1. The surprising role of the heart. *Journal of Alternative and Complementary Medicine*. 2004, 10(1).

4. Mochnáč, T. 2010. *Systémový prístup v diagnostike a liečbe*. [Zborník XIV. Lekársky kongres naturálnej medicíny] Košice : Lekárska spoločnosť naturálnej medicíny, 2010. ISBN 978-80-970500-0-9.

5. McCraty, R. Atkinson, M. RT Bradley. 2004. *Electrophysiological evidence of intuition: Part 2. A system-wide process?* *Journal of Alternative and Complementary Medicine*. 2004, 10(2).

6. Sheldrake, R. 1988. *The Presence of the Past: morphic resonance and the habits of nature*. New York, : NY: Times Books, 1988. ISBN 0-8129-1666-2.

7. Solár, G. 1999. Košice : In: XIX. Congressus Acupuncturae Slovaca et Bohemiae, 1999. *Taktilný S test, nová metóda efektívnej akupunktúrneho diagnostiky*.

8. Solár, G. 2003. *Prevenencia, diagnostika a liečba tzv. psychosomatických porúch a akupunktúra*. Psychiatria, Psychosomatika v teórii a praxi. 2003, 4.

9. Solárová, Z. 2013. *Diagnostické možnosti a perspektívy modifikovaného dotazníka MKBD-S podľa autorov Korngolda a Beinfieldovej*. Bratislava : Lekárska spoločnosť naturálnej medicíny, 2013. ISBN 978-80-970500-3-0.

10. Tarbajovská, D. 2010. *Piercing - moderná ozdoba alebo spúšťač zdravotných problémov?* [Zborník XIV. Lekársky kongres naturálnej medicíny] Košice : Lekárska spoločnosť naturálnej medicíny, 2010. ISBN 978-80-970500-0-9.



Advertisement

Life without pain.



Editorial office is not responsible for the content of advertisements.



Diagnostics of Meridian Blocks in Acupuncture

Teodor Mochnáč, M.D., PhD.

Abstract

The role of the acupunctural diagnostic is not to define illness manifestation but to determine dynamic energy-informatic state of the system. The demonstration in the biomorphological level is called symptom, syndrome, functional disorder or disease.

On the energy-informatical level another manifestations of disease can be so called meridian blocks.

These are consequences of the whole pathological energy-interaction state or on the other hand the exanthrope.

Aim of the study

To objectify: 1. What actually the block of meridian is? 2. What kind of relationship is between actual TST (tactile Solar test) examination and measurement of the cutaneous impedance 3. multisystemic character of the meridian blocks.

Methods

Author prefers an acupuncture examinations by TST (tactile Solar test) of the rotation microsystems RF (rotating microsystem of the face) RMB (rotating microsystems of the breasts), UTMT (universal tendomuscular test) in patients with various biomorphological pathology. Based on TST was defined localisation of the meridian block and measured cutis impedance in the place of the projection acupuncture points above and below pathology. To treat pathology we used laser puncture upon interactive diagnostic energy, power and frequency strongly individually. After treatment was done control cutis impedance and TST.

Results

In all patients we achieved adaptation microsystems and blocs. Based on results we found out a few characteristics of the meridian blocks. More frequently due to of the decreasing gradient cutis impedance in the direction of the meridian. Laser puncture of the local meridian block influence the whole energy- interaction system of the human.

Discussion

Surprising effects of the laser puncture suggest the meridians are subsystems that are in relationships with another subsystems according to fractal structure principle. The system is directed to the balanced state.

Conclusions

The author defined and conformed the physical characteristics of the meridian blocks.

Be turning out to be the block is not local manifestation but reflects changes of the whole energy-interaction system of the human. The system of the two points of meridian is a system too. Trough it we can influence general changes another systems.

Keywords: Block of meridians, the laser puncture, subsystems of meridian

Introduction

To begin, I would like to draw attention to the definition of an acupuncture meridian according to the latest concept of acupuncture approved in 2006. An acupuncture pathway or trajectory is understood as a functional linking of complete systems of active points (in relation to the systems of organs and other systems) both on the surface and inside of an organism.



The goal of the acupuncture diagnostics is not to determine a pathological symptom, but to determine a dynamic, ergo-informational condition of a system that on a bio-morphological level manifests itself as a symptom, a syndrome, a functional malfunction, or an illness. On an ergo-interactive level the so-called meridian blocks are understood as either manifestations of an overall pathological E-I condition or a cause of a bio-morphological change.

In the medical praxis the so-called meridian block may be encountered rather frequently. From a pathophysiological point of view, it is a consequence of an overall or a local malfunction on all levels of a three-level model of the ergo-informational system.

A meridian block arises as:

1. a traumatic damage
2. a scar
3. a tumor
4. an excess of the chi function on a trajectory - bi (pi) syndrome
5. a malfunction of the chi function on a trajectory – stasis
6. a malfunction of a subsystem

In their everyday praxis everybody has probably come across a meridian block. We find it sufficient to characterize a block as a diverse tactile sensitivity along a meridian with a therapy in the form of acupuncture bridging. However, we are more interested in the functional characteristics of a block. Namely, a meridian may be classified as a meridian only if the mutual interactive characteristics of the projection of points manifest themselves as an increase or a decrease of the chi potential. This dynamics will then manifest itself through a change in the ergo-informational condition of a system. Therefore, it seems appropriate to characterize a meridian block as a mutual relationship of two characteristics of points delimiting a pathological manifestation that may be expressed through a tactile or electric gradient.

The goal of the study is to objectify the following:

1. What is a meridian block?
2. The connection between tactile level of the block and the level of electric skin conductivity.
3. The multi-system character of a meridian block.

The TST method that has been verified through a decade of clinical praxis is an objective non-instrumental method which we shall compare with the measurement of electric skin conductivity on a trajectory.

The electric skin conductivity in the projection of points on a trajectory depends on a circadian biorhythm, external and internal factors and has a character of a sinusoid. Since the chi does not flow, we may not talk about the flow of chi, but we talk about an increase of the chi potential on a trajectory. The value of electric skin conductivity in the projection of a point on a trajectory may be measured in Siemens.

Definition of a block on the tactile TST level –in case of a different tactile sensitivity (hypersensitivity or hyposensitivity) on a trajectory in the direction of the chi increase, we may speak about a block on a trajectory. (4) If the hypersensitivity in the projection of a point is above the block in the direction of a trajectory, we speak about a decreasing tactile gradient. If the hypersensitivity in the projection of a point is below the block in the direction a trajectory, we speak about an increasing tactile gradient.

The block may be therapeutically treated through bridging, a small puncture or a harmonization of an organism through a systemic approach.

Definition of a block on the level of electric skin conductivity -If the conductivity of a point in the direction of the potential growth is lesser than that of the previous point, the gradient is decreasing. If the conductivity of a point in the direction of the potential growth is higher than that of the previous point, the gradient is increasing. In this relation we may talk about a block only with regards to a tactile examination of a current pathological unit in the projection of a meridian. Objective definition of a block based on the measurement of electric skin conductivity itself is currently not possible. We are able to define qualitative and quantitative changes in relation to other meridians. (3)



Methodology

On the whole 40 examinations of meridian blocks were carried out on a group of 26 patients and additional 18 therapeutical sessions took place.

A complete acupuncture examination through TST (Tactile Solar Test), RTV (rotary microsystem of face), UTMT (universal tendomuscular test), KM (system of complex meridians).

Diagnosis of a TST block, measurements of electric skin conductivity, interactive definition of laser values, laser-acupuncture, control TST, and control measurements of electric conductivity.

The criterion for evaluating a successful treatment was a tactile compensation of the block and recess of somatic symptoms.

Results

Regarding the block assessment through TST and measurements of electric skin conductivity, several characteristics of their mutual relationship were established. Under an objective examination, a block manifests itself as:

1. A tactile hypersensitivity in the projection of a point above the block in the direction of a trajectory and a decreasing gradient of electric skin conductivity in the direction of a trajectory.

2. A tactile hypersensitivity in the projection of a point above the block in the direction of a trajectory and an increasing gradient of electric skin conductivity in the direction of a trajectory.

3. A tactile hypersensitivity in the projection of a point below the block in the direction of a trajectory and a decreasing gradient of electric skin conductivity in the direction of a trajectory.

4. A tactile hypersensitivity in the projection of a point below the block in the direction of a trajectory and an increasing gradient of electric skin conductivity in the direction of a trajectory.

5. In case of benign pathological units in breasts, the gradient of electric skin conductivity is decreasing in the direction of the chi potential growth in 100% of all cases

(12 patients). (2)

The TST and measurements of electric characteristics represent two different levels of block diagnostics, both describing one and the same phenomenon, while occurring concurrently. In the quantum physics we call this phenomenon a superposition. (1) It means that a phenomenon (a pathological one) will manifest itself on two or several levels concurrently. In therapy it means an intervention on either of the levels with the same effect.

Our findings:

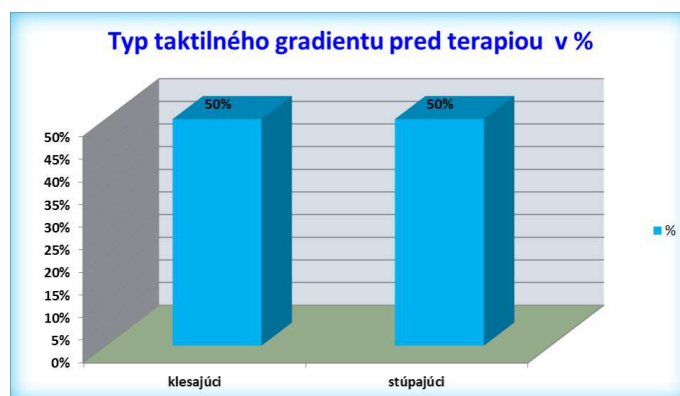
In 9 out of 18 examinations the tactile gradient is decreasing, in 9 out of 18 examinations the tactile gradient is increasing.

The gradient of electric skin conductivity is decreasing in 10 examinations and increasing in 8 examinations.

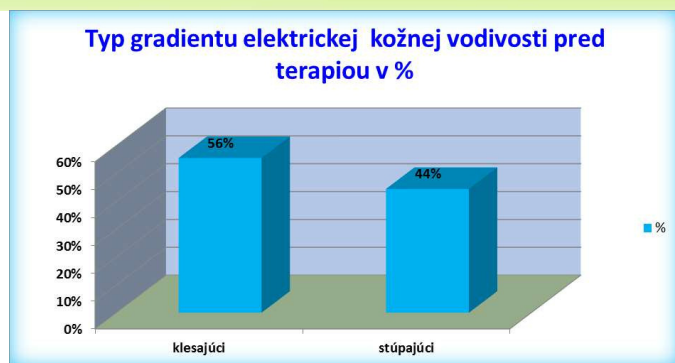
In a group of 18 patients, the tactile gradient is identical with the electric skin conductivity gradient in 12 patients (67%) and different in 6 patients (33%).

The gradient of electric skin conductivity is decreasing in 12 patients with benign pathology in the projection of a meridian.

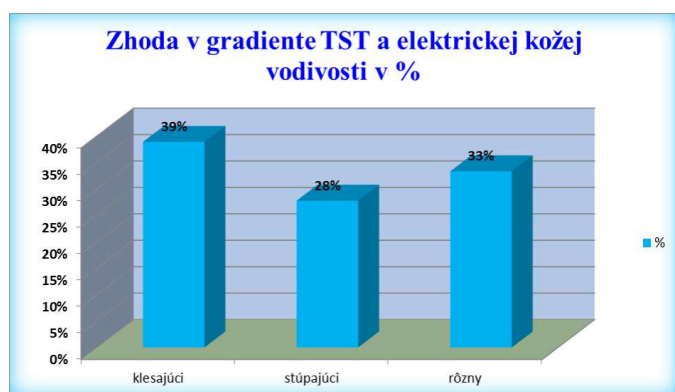
After the laser-acupuncture treatment the tactile gradient is compensated in 95% of patients, in who we did not find any benign affects in the projection of a trajectory.



Graph 1 Occurrence of tactile gradients before a therapy in %



Graph 2 Occurrence of the electric skin conductivity gradient before a therapy in %



Graph 3 Agreement in the TST gradient and the electric skin conductivity gradient in %

Conclusion

1. We proved the importance of TST as an objective method indispensable in medical praxis.
2. Based on a therapy in the projection of a block, we proved its systemic influence.
3. We concluded that in case of benign tumors the structural changes on a bio-morphological level manifest themselves on the level of electric skin conductivity in the form of a decreasing gradient in 100% of all cases.
4. We concluded that using the interactive diagnostics and a therapeutical amount of laser, we may affect the compensation of tactile characteristics and the somatic symptoms in 95% of all cases.
5. We proved the necessity to characterize a block

on two diagnostic levels at the same time

We proved the agreement in diagnostics of a meridian block through TST and through measurements of electric skin conductivity in 67% of all cases.

Teodor Mochnáč, M.D., PhD.

Centrum of Acupuncture and diabetic foot

Pod vinohradmi 14 A

949 01 Nitra, Slovak Republic

email: tmochnac.akupunktura@gmail.com

Bibliography

1. Hawking, S. (2006). *Vesmír v orechovej škrupinke*. Bratislava: Slovart, spol. s r.o., Bratislava, s. 216, ISBN 80-7145-668-8.
2. Mochnáč, T. (2008). *Akupunktúrna elektrodiagnostika mammy a ďalšie tendencie rizika*. MAMMO TREND-D, 2008. Trenčín, referát.
3. Mochnáč, T. (2011). *Rizikové faktory a funkcie komplexných akupunktúrnych dráh vo vzťahu k ochoreniam prsnej žľazy*. Vysoká škola zdravotníctva a sociálnej práce sv. Alžbety, Katedra verejného zdravotníctva, (s. 70-71). Bratislava 2011, dizertačná práca.
4. Solár, G. (1999). *Taktilný S test, nová metóda efektívnej akupunktúrnej diagnostiky*. XIX. Congressus Acupuncturae Slovacae et Bohemiae, Košice 1999, (s. 27).



NOVINKY na slovenskom trhu

Spoločnosť VitaFit spol. s r.o.

ponúka komplexnú starostlivosť týkajúcu sa maximálneho pohodlia boľavých nôh a ošetrovania kurieho oka. V sortimente máme špeciálne topánky a vložky na rôzne deformácie nôh a výrobky proti plesniam a baktériám.

Ponúkame

Silikónovú podpätenku na päty a silikónovú vložku do topánky – s podporou priečnej aj pozdĺžnej klenby – proti bolesti preťažených kĺbov a chrbtice. Výrobky sú plne elastické z vysoko kvalitného materiálu. Na Slovensku je to novinka.

Maximálne pohodlie ponúkajú z Anglicka, od firmy Cuxson and Gerrard, dovážané špeciálne vložky s vrstvou z najkvalitnejšej ovčej kože.

- **Celé vložky do topánok – Perfect form** – s podporou pozdĺžnej klenby,
- **vložky do topánok s podporou priečnej klenby – Arch form,**
- **¾ metatarzálné vložky do topánok – Meta form,**
- **podpätenky – Heel form,** s odstrániteľnou strednou časťou pre osoby trpiace výrastkami na päte.

Sviežosť a hygienu nôh pomáhajú udržať špeciálne antibakteriálne a protiplesňové výrobky

- **Sprej proti plesniam** – jeho účinok proti baktériám a plesniam potvrdzuje lekárska prax
- **Trvácne vložky do topánok proti baktériám a plesniam** – navrhnuté pre zmiernenie nárazov, únavy a bolesti, ich antimikrobiálna zložka likviduje baktérie a plesne
- **Trvácne podpätenky proti baktériám**
- **Deo vložky do topánok** – aktívna

Odporúčame tiež vyskúšať spreje na chodidlá a ďalšie produkty, napr. ponožky so strieborným vláknom na každodenné nosenie – aj pre diabetikov! Výrobky majú vysokú kvalitu.

uhlíková vrstva absorbuje zápach, antibakteriálna zložka zastavuje ich rast

- **Pohodlné vložky do topánok** – pomocou penového materiálu zabezpečujú celodenný komfort
- **Výstelky na päty**

Široký sortiment produktov ponúkame aj na prevenciu proti otlakom a pluzgierom

- **Týčinku proti otlakom a pluzgierom**
- **Gélový oddeľovač prstov na nohách**
- **Gélový oddeľovač palca na nohe**
- **Gélové vložky do topánok**
- **Gélový chránič na výčnelok alebo pluzgier** a na ošetrovanie už existujúcich otlakov a pluzgierov
- **Náplasti na otlaky**
- **Zvláčňujúca starostlivosť o otlaky**
- **Tlmiace vankúšiky na výčnelky a pluzgiere**

V našej ponuke nájdete prípravky a výrobky na ošetrovanie kurieho oka

- **Prípravok na odstránenie kurieho oka**
- **Náplasti na kurie oká**
- **Zvláčňujúce náplasti na kurie oká**
- **Tlmiace vankúšiky na kurie oká, oválne a okrúhle**

Výrobky na slovenský trh dodáva:

VitaFit spol. s r.o.

Kontakt: 0905 448 715

www.epredaj.com





Biophysical basics of natural medicine

Larisa Yurevna Slatinskaya

Abstract

Paper on "Biophysical basics of natural medicine" consists of four parts (that will be gradually published in the magazine). Author of the paper explains causes of misunderstanding of principles of natural medicine. Basics of natural medicine were layed out in ancient times and do not loose its actuality in these times. Regardless of this we have scientific medicine existing only few centuries and literally deviding the integral human organism into parts, that takes leading edge in human healthcare. Lets have a look on scientific medicine: it prefers strong chemotherapeutics that very often cause side effects. Those are by scientific medicine itself classified as "drug addiction". It is obvious that something is wrong here. Regardless of natural medicine's deficiency in scientific based methods, it has one huge advantage. Illness is percieved not as organ damage, but system fault of whole organism functions.

Person is percieved as open biocybernetic sytem. That means, first, that biochemical reactions run inside the organism and, secondly, there is a direct connection and feedback between the organism and its surroundings thru biophysical fields and radiation.

In the paper there is an effort to clarify that human being is dual- whole and at the same time dual, it is a biochemical and biophysical substance. Also, chemical reactions in organism can be managed thru

physical fields and radiance of particular person.

This is the current natural medicine- medicine able to evaluate, correct own (natural) vibration and radiation that manage chemical processes in the organism of a particular person.

Keywords: natural medicine, biochemistry, biophysics, energo- informatics, homeostasis, wave matrix of personal homeostasis.

Introduction

Natural medicine- is a field of science and practical activities that target the maintaining and strengthening of human health. Natural medicine connects results of traditional medicine, orthodox-official medicine, rich tradition of folks medicine, methods of prevention and healing of deseases by non- invazive means and non-medicametous that is non-synthetic preparations.

Natural medicine as science studies soundness of processes that maintain and renew functional reserves of a man by dynamic evaluation and correction of health status in every period of his life.

Objects of natural medicine are healthy but also ill people in remission of their illness, who need to evaluate level of their health, reserves of adaptation and correction of homeostasis.

Main goal of natural medicine is maintain and renew health of practically healthy people. Further, to maintain and renew health of people that have functional disturbancies or pre-disease states whose



characteristic is their reversibility.

Natural medicine is often called intergal, because it connects methods that already proved their effectivity and different directions of human organism renewing: acupuncture, aromatherapy, art- therapy, auto- training, Ayurveda, food supplements, bio-energetics, bio-energo- information therapy, vegetarian food, eastern medicine, hirudo- therapy, homeopathy, dietology and food standards, breathing systems, sound therapy, Yoga, manual therapy, folk medicine, tibetan methods, traditional chinese medicine, colour and light therapy, phytotherapy, bioresonance and energovibrational technologies, and many others that are not yet fully explored by current science.

Natural medicine is a method of searching for harmony with Nature. Official medicine looks for disease fighting methods by strong dosis of drugs opposing the disease. It considers the disease as enemy that is to be destroyed. Meanwhile natural medicine tries to find a way to renew the harmony of organism by natural means and methods of influence.

Natural medicine is art and, like real medicine, it accesses the patient individually, as often misses in official russian medicine. However, maybe the main thing is more in the attitude of a person to his work rather than in the method used? For art- that is not an institution or organisation, a man filled by spiritual culture speaks the language of art.

There are more and more people who are not satisfied with methods of orthodox medicine, its drug therapy and a long list of possible side effects of drugs. If you visit your general practitioner because of a flu, you get a proper drug prescribed. For a headache you get another drug. If you have also a

backache, you get additionally a drug for that, too. This way your final recipe probably contains several names of different chemical drugs with their side effects. It is still not sure that you recover fast and without complications from your flu. What to do with fatigue, irritability, depression?

Official science medicine literally turns away from many alternative means and methods of healing in order to prefer chemotherapeutic preparations. It has to be admitted that however clean the preparation may be, it remains synthetic product of human brain and hands with its side effects. That is why it stays foreign for human organism. Besides, some forms of diseases are till today still not possible or only very difficult to cure by known means and methods of scientific medicine. Why is it that people search for new effective means of help with different diseases, in this time of fast scientific growth? In these circumstances it sounds like a good idea to re-evaluate the basic principles of natural medicine in a view of current scientific worldview. Progress is evident in this direction. Regardless of that no medical faculty prepares proffessionals in the field of natural medicine nowadays in Russia, but for example there is a wide range market of services in natural medicine in the USA. I think next fact could be for many quite unexpected: regardless of advanced scientific medicine traditional methods of natural medicine are quite popular in the USA. Four of ten Americans turn to homeopaths, needle- therapists, chiropractors and healers of different specialties every year. Popularity of dietetic and food supplements prepared based on alternative ideology rises.

This popularitiy has a legitimate reason. Due informations that were published in USA there were 659 000 Americans hospitalized for complications



caused by drugs in 1990. Seemingly innocent drugs as analgetics caused 186 deaths in 1992. Non-steroid antiphlogistics- aspirin, ibuprofen and others caused 3300 deaths yearly by their side effects. 194 people died after antidepressants in 1992, 17 people were killed by antihistaminic preparations.

Research published in „Magazine of american medical association“ showed that a disease caused by medicaments is a cause of death of about 100 000 people. Approximately 2.2 million people have severe complications every year. Due to „American center for drug control“ (FDA- Food and drug administration) expensive antibiotics are prescribed to 44% of children and 51 % of adults to treat a disease caused by viruses that are absolutely resistant to antibiotics.

Regarding economic part, that is simply amazing. USA citizens pay more than 130 billion dollars for natural medicine services yearly!

It is how natural medicine becomes not only a serious competitor of official healthcare system, but also has a great chance to widen its sphere of influence.

Nevertheless, principles and methods of natural medicine are extremely slowly introduced in Russia presently. It is conditional on more factors. Not only we virtually lack qualified experts, but also information about natural medicine is missing. Even terminology that exactly and clearly describes the field of influence of natural medicine is missing. It is simply necessary to carry out extensive educational work among the population here. It is simply necessary to unify and coordinate the work of each of natural medicine centers.

Russian society of natural medicine deals with popularization, development and implementation of

principles and methods of natural medicine in our country. Leading chairman of scientific Society of natural medicine is Vladimir Alekseevich Kurashvili, medical doctor, professor, valuable member of Russian and European academy of natural sciences.

Based on a period of more than fifteen year operation of center of natural medicine “ECOLOGY OF LIFE” a branch office of Russian society of natural medicine was established in Siberia, in the geographic center of Russia, in the city of Krasnoyarsk in 2010. Slatinskaya Larisa Yurevna - natural medicine doctor (Diploma of the International University of natural medicine USA), Professor of the Russian Academy of Natural Sciences (RANS) and author of this publication is responsible for management of the branch office.

In our branch office we pay a lot of attention to educational work with people in a sense that natural medicine is not a separate science, but it extends possibilities of orthodox medicine due integration of knowledge verified by centuries from different parts of our country and from abroad.

As for scientific- practical activities, we follow the path of interdisciplinary research in fields of biology, physics, chemistry, mathematics (biochemical physics) in our branch office. We use a special biophysical unit with biologic feedback to evaluate status and correction of homeostasis of a person. This unit enables modelling and correction of person's biophysical state- that is health, based on his physical fields and vibrations. In addition the unit enables to choose a complex of preparations individually for a person and to predict stages of his/her renewal.

Why did we choose this path and what is its connection to natural medicine? Absolutely direct! It



is already a long time that a fact of individuality of each person including his/ her illness does not raise doubts. Although there is an illusion of similarity, diseases of different people have different causes, they develop differently and they combine differently. And what can be more natural than own vibration?

Is it known that human as a biological substance is composed of elements of the table of DI Mendeleev. Every chemical element of this table has its electromagnetic vibration in the visible and invisible range of frequencies.

In this sense, human is dual by being material substance (composed of chemical elements) and also wave nature (vibration of chemical elements) at the same time.

In present times it is proven that every chemical reaction is always accompanied by creating an information that means change of physical characteristics.

In accordance with the laws of quantum mechanics quanta are energy as well as information carriers, because they have particle characteristics (material- energy) and wave characteristics (information) at the same time. Based on this, human is in a view of biochemical physics an energy-informational structure.

Everything that is connected with visible- material body of a person is virtually examined into smallest detail. Everything that is connected with invisible body- body of fields and vibrations- is not yet known by scientific medicine, because it goes beyond traditional research, mostly biochemical research.

On this background a thesis that was like a red thread on International forum of nanotechnologies (1. - 3. November 2010 in Moscow) presented in a report by Michail Kovalchuk- director of RSC (Russian

scientific center) "Kurchatow Institute", scientific Secretary of Presidents Council of RF for science, technologies and education, member-correspondent of RAV, seems to be very perspective. It says: "During hundreds of years of evolution humanity has created narrowly specialized system of science and education. This system is unique on one hand, because it enabled the creation of our present civilization. On the other hand- it is an impasse. Country that accepts the challenge to interdisciplinary organization of science will become a leader in the 21st century. Future lies in close cooperation in fields of cellular and molecular biology, biotechnology, physics, chemistry, nanotechnologies and information technologies. This interdisciplinary approach was named "Convergence".

In our work we use interdisciplinary approach and receive data on the state of a person not only by biochemical methods, but primarily by biophysical methods.

We absolutely not reject methods of healing that were developed thru centuries. In the age of scientific and technological progress we simply consider as necessary the search for new directions in the field of natural medicine that effectively influence human health.

Every person is as an element of living nature strictly individual in absolutely everything, including the individual balance of his/ her health. Thou aggressive surrounding environment try hard to disturb the healthy balance and cause disease.

Surrounding environment- is a summary of external exo- environmental exposure in relation to a human: geomagnetic, natural, technogenic, biological and social that are in direct or indirect relation to human organism. Regardless of seeming



differences, all exo- environmental influences have one physical nature, it is always an influence of electromagnetic fields on human.

Physicists have long been aware of following: human organism is primarily a difficult self-organizing cluster of energy in shape of wave processes and standing electromagnetic waves. Those become material by creating structures on molecular level.

In accordance with element- wave theory of theoretical physics there are elementary particles generating electromagnetic waves that have characteristics of matter and wave in the same time. Elementary particles connect into atoms that compose chemical elements and molecules of chemical elements that build everything in the visible material world. Wave- like nature of elementary particles is not at all lost in this process.

Based on previous a person on one side cannot live outside of electromagnetic fields, as he/ she is an element of this field and thereby stands to all laws of electromagnetism. On the other side, a person as biological substance is subject to all laws of material world.

Personal homeostasis- is dynamic balance of electromagnetic waves inside the organism of a person depending of his/ her date of birth and his/ her harmony with electromagnetic waves of surrounding environment (energetic and informational).

The need to “nurture” oneself with similar frequencies from outside environment is quite obvious for maintaining the balance of electromagnetic waves of various spectrum of frequencies that are individual (natural) for each organism.

Based on previous- every person is individual.

This implies that the wave matrix of personal homeostasis must be protected against foreign energoinformational influence.

Major kind of our activity- bio cybernetic modeling of safe states of wave matrix of personal homeostasis of human taking into account the date of birth, evaluation and correction of disorder of its parameters.

We help people to reach their natural vibrations by using, as we discussed before, methods of biophysical technologies. This way a person as open self-tuning bio cybernetic system starts his/ her way of self- regulation.

Electromagnetic nature of man

Modern science knows that wave processes rule the living nature. They determine all unthinkable variety of the material world.

Academitian V.I.Vernadskij said: „waves of different lenghts radiate all around us, everywhere, they persistently change thru their joining and reflecting.“ He emphasized that „everything alive is a planetary- cosmological phenomenon that arose in cosmological surroundings and according to that it is subordinate to the laws of Nature“.

Danish physician N.Bohr introduced a model of an atom in the beginning of last century. Austrian physician E.Schroedinger introduced a wave model of its electron cloud. It is also experimentally determined that electron has not only properties of a particle but that of a wave aswell.

Based on these postulates a science was created - quantum mechanics that studies the interaction of radiation and matter. Founders of quantum mechanics are W. Heisenberg (Nobel price in 1932); E. Schoedinger and P. Dirac (Nobel price in 1933).



In classrooms today the fact that the electron, proton, neutron, and other elementary particles are simultaneously material and wave is not a surprise for anybody. This is an undoubtedly proven paranormal phenomenon - the simultaneous existence in two principally different states, called duality of nature.

Today, no one doubts that the atom consists of elementary particles and atoms are further "bricks" to build molecules of any substance.

Man - the particle of living nature, so he consists of atoms in the first place. Every atom is a core with electrons that orbit around it and also rotate around their own axis. That gives rise to waves. The amount and form of electrons and their orbit give every material, living organisms and also every man specific and inherent complex of wave frequencies.

There is no absolute matter in the nature, nothing absolutely solid. With multiple magnification, any material object, including human - these are the nuclei of atoms (protons and neutrons) surrounded by constantly orbiting waves (electrons).

As result, absolutely everything primarily exists in a state of vibration, creating its own unique frequencies.

Change of character of these frequencies unconditionally lead to changes in material structure of the substance. And in reverse, any mechanic disruption of the form of substance unconditionally causes changes in character of its own frequencies.

There is a widespread opinion that everything in human organism happens only on the level of chemical processes- ie on palpable molecular level. After all, even the ancient Buddhist treatise "Sutra of the wisdom of heart" says: „what can be seen, does

not have a form and what can not be seen, has a form.“ This, at first sight strange argument, that is attributed to Buddha, can be interpreted from the perspective of modern science. The reason is that the human eye can see objects only in a certain band of frequencies. Indeed, our eyes do not perceive wave patterns at all.

Today, in the 21st century, it is quite obvious that the nature of human body is dual, ie coexistence of matter and waves in a balanced unity and mutual ability to continually move from one state to another.

And so finally the time has come to look at the human body in two ways: as a solid, visible, tangible one and as an invisible wave body.

Yet in 1999, President of the International Academy of Information, Communications and Management, Doctor of Biological Sciences SP Repjev noted in his document, "... every object, every organism has a physical and energy-information structure."

Research done in 1980 under the leadership of Professor S.P. Sitko (Department of Nuclear Physics, University of Shevchenko, Ukraine), allowed to conclude that in addition to anatomical and morphological systems of the human organism, that are visible to the eye, there is (and really exists) what we do not see.

It is a so called electromagnetic skeleton of human, a field in the millimeter range of electromagnetic waves that is not visible by human eye. Field is formed due electromagnetic activity of each cell in the organism, of each atom. While, when established, it directs, synchronizes and coordinates the activities of all organs and structures of organism during prenatal time, as well as after the birth of a



person during his/ her lifetime.

Electromagnetic waves are the most important powers in the nature. They direct metabolism, growth, hormonal balance, perceiving of pain, ie all psychical manifestations of man.

The fact that electromagnetic fields direct biochemical processes is known only a short time. In 1936 Gustav Stromberg claimed in his book "Soul of the Universe" that the structure and evolution of living beings are connected to some "System of immaterial waves". These fields have the ability to create very complex molecular connections and organize them so that they can become living matter.

Studies, carried out in the U.S. and led by Professor Burr (Yale University School of Medicine), allowed to conclude: "All living organisms have electric fields, and as a result, they have magnetic fields that are complex in nature. These fields completely disintegrate at death."

Franz Morell, german physician and researcher and Erick Rasche, electronics engineer wrote: "Man is immersed in the infinitely large and at the same time infinitely small system of electromagnetic waves, and is itself part of that system. They are the waves of the Universe, waves of our solar system, those of small and large galaxies, waves emanating from the finest sphere of our organs and tissues, cells, molecules and atoms, subatomic realm of protons and electrons. And in this vast spectrum one must live, because otherwise, probably, his life is not possible. Because: without electromagnetic waves life is probably unthinkable".

In the opinion of Y. S. Boot, Doctor of Science, RANS Professor, the external generator of electromagnetic waves for people is Earth's

magnetic field, which constantly directs its power line from North Magnetic Pole to South Magnetic Pole. As a result, a person exists in electromagnetic flux every moment and he/ she himself/ herself is the radiofrequency generator of his/ her own waves. If we would "disconnect" people from the external generator, electromagnetic waves inside them would subside and they would cease to exist.

French researcher, Professor Louis - Claude Vincent, the author of the direction of bioelectronics, pointed out that the energy balance in the body depends on the electromagnetic forces of cosmic origin, and also on the electromagnetic forces of the organism itself.

Researcher, physicist Poop argued that every organ and every cell of man has its specific spectrum of waves and its specific characteristics of these waves. Maintaining these waves depends on the "quality" of the cell- , organ- , tissue- or whole organism resonator.

H. Fröhlich in the years 1977 - 1988 substantiated the theory and obtained experimental evidence of the fact that living cells produce varying electromagnetic fields. He developed a general theory of coherent oscillations in biological systems.

In 1986 A. S. Davydov described activation, relocation and movement of electrons along the peptide chains of protein molecules in the form of solo waves - solitons, which complemented the model of H. Fröhlich.

According to the theory of the German scientist Muller, a man is a synchronized standing wave controled by a system of bio- management. From radioelectronics it is known that a standing wave is a direct and reflected wave with stable frequency and



amplitude of the signal. There is information stored in the wave in the form of modulated frequency characteristics.

Therefore, human life is not possible without electromagnetic waves, each cell of the human body communicate with each other, exchange information via electromagnetic radiation modulated according to the amplitude, frequency and phase.

Man consists in 80-90% of water. Thus he is actually a liquid crystal, consisting primarily of molecules that are electric dipole. Electromagnetic waves that spread in the liquid crystal carry within them the energy of the wave (OH⁻) - electrons and its encoded information (H⁺) - protons.

Therefore, water molecule is a bimodal (double) structure. Individual water molecules are linked through hydrogen bonding and form clusters of molecules. Inside the clusters there are different substructures with different molecular modules. These various modules in clusters contain specific information. So we understand water in terms of an electromagnetic wave, and clusters in terms of frequency characteristics of the waves that carry information.

Researches carried out in our center showed that every person is- according to his date of birth, on energy - information level- a standing wave with its specific and inherent frequency band.

The nodes of the standing wave are human energy centers, the chakras. Chakras - are dipole structures with one end in the human body, and the other end in its energy - information field. Chakras receive different radiation from environment and generate a spectrum of frequencies for the organs and systems under their control. Chakras are also

special resonators that are able to emit and absorb electromagnetic waves. That is essential for energy - information exchange within the body and between the body and its external environment.

The work of Dr. L. RANS Y. Slatinskaya proved that even within a period of time, each zodiac sign, frequency bands for people vary.

The duality of energy in human body is the specific and for concrete person relevant spectrum of electromagnetic waves. Specificity consists of energetically harmonized/ balanced relation between components of a wave, its bimodality – directly the transmission of a wave in liquid crystal (OH⁻) and modulated undulation within the wave that carries information (H⁺).

It should be noted that the modulated undulation can have also a non-linear character. The reason for it is in the fact, that electron performs during its motion along its orbit simultaneously a rotation around its axis. This phenomenon, called "spin", was discovered by a group of scientists of the Moscow Institute of Theoretical and Applied Physics under the guidance of academician G. I. Shipov and A. E. Akimov. Rotation creates a vibrant field called torsion field or spinning field, which is the carrier of information.

Studies, we conducted, showed that only specific electromagnetic waves that are inherent to a person belong to him/ her. A person receives his electromagnetic waves at birth. Why does this happen? It is because inside the mothers' body the child's body has already its unique electromagnetic skeleton, modulated only by hereditary (internal) information received from parents (genetic transcription). Meanwhile each organ, system and



cell of child's organism emits its frequency characteristics.

At birth the child changes its living environment and its organism is permeated by summary of radiation of all heavenly bodies that reaches Earth in that very moment. A kind of secondary external modulation of child's electromagnetic skeleton takes place by frequency characteristics coming from cosmos. A part of frequency characteristics resonates with hereditary frequency characteristics of the child, and thus intensifies them, the other part inverts, thus inhibits the natural frequency of the child.

All incoming frequency characteristics of the cosmos constantly change their parameters, because all the planets move through the Zodiac - the annual journey of the sun in relation to the stars.

As result, people born under different Zodiac signs receive their baseline preconditions of health, wealth, success.

In the opinion of Dr. L. RANS Y. Slatinskaya the electromagnetic waves that a person receives at birth are a wave matrix of personal homeostasis. Wave matrix of personal homeostasis is bimodal – it is a wave function and material carrier at the same time. Wave matrix that is modulated by hereditary and cosmic information must be constant throughout a person's life. It is because the wave matrix of personal homeostasis is responsible for building the physical body of man. It predetermines the life activity of organs, tissues and cells of the body. One can be healthy, wealthy, successful in relationships, happy only under constant parameters of his/ her wave matrix. Any frequency response deviation of wave matrix wavefront array electromagnetic modes of the personal homeostasis which is determined by the

date of birth causes to health damage and life problems.

Our years of research has shown that those who have high indicators of their health, wealth, success, including financial success – those are people who are within their frequency characteristics of their wave matrix of homeostasis. But studies have also shown that the percentage of those fortunate is very small at around 4% of the total population (regardless of age).

The remaining 96% of the population has a diversion from the parameters of their wave matrix. That is necessarily reflected on the state of health, or welfare, happiness, success, or on either simultaneously. This is explained by the fact that the human organism resonates with bands of frequencies in the environment that are pathological for him.

What distorts the wave matrix of personal homeostasis? It's electromagnetic smog again. Energy and information that get in the body from outside are to a large extent disharmonic undulations. They cause distortion to the wave matrix of personal homeostasis. Sometimes a person passes into the second energetic period and gains wave patterns of not his/ her own matrix.

All this ultimately results in:

- diseases
- discrepancy in the family
- discrepancy in the family
- failures
- breakdown of business (etc.)

This happens because most people do not know



that the way to health, happiness, prosperity, success in relationships is open to everyone. All that's needed is just regular bio cybernetic modeling of one's homeostasis, i.e. evaluation and correction of distortions of one's wave matrix. One's wave matrix is than brought to dynamic equilibrium with electromagnetic fields of surrounding environment.

As result the risk of diseases, especially severe will significantly reduce, the environmental problems and inconvenience will significantly lessen. If someone does get ill, the disease can be managed with help of own inverted emissions in most cases.

This means that the wave matrix of personal homeostasis must undergo regular assessment and energy - informational correction. One has to constantly "nourish" himself by frequency characteristics that are able to resonate with frequencies similar to those received at birth. Those nourishing frequency characteristics should not allow dampening of one's own electromagnetic waves, because that would add on inadequate range of own undulations that were "destroyed" by external disharmonic undulations. Consequently, during the life a human organism will successfully extinguish external effects of foreign energy modulated by foreign information that constantly affect him/ her. Only then a person will be reliably protected.

Conclusion

To maintain a dynamic balance of own electromagnetic undulations of different spectrum of frequencies natural to each body, it is necessary that a person constantly "nourishes" himself/ herself with similar frequencies from the external environment.

In the following sections we will attempt to answer the question: what determines energoinformational safety of human homeostasis.

<http://krasecolife.ru>

vadimslat@mail.ru

Bibliography

1. Akimov A. E., Shipov G. I. *Torsion fields and their experimental manifestations*. Moscow, International Institute of Theoretical and Applied Physics RAV, 1995.
2. Aleshenkov M. S., Rodionov B. N. *Interaction of physical fields and radiation with biological objects and preventing their negative effects*. – M.: MSUL, 1998.
3. Archipov M. E., *Biophysical effects of exposure to a living organism right - and left-hand electromagnetic fields*. Abstract of a thesis to obtain scientific degree of Candidate of biological sciences, 2004.
4. Vernadskij V. I., *Learning about the biosphere*. – Mn.: Ecoperspektive, 2007. – 208 s ISBN 985-469-188-8.
5. Vernadskij V. I., *Living substance and the Biosphere*. – M., 1994. ISBN 5-02-005754-1
6. Garyaev P. P., *Wave Genome*. M., 1994. ISBN 5-7816-0022-1



7. Gulyayev Y. V., *Physical fields and radiation of man: new methods of medical diagnosis* / In Coll. Science and culture: selected lessons. – SPb, 2009.
8. Gulyayev Y. V., Godik E. E., *Physical fields of biological objects*. Article in the book "Cybernetics live: Biology and information", M.: Science, 1984.
9. Drunvalo Melchizedek. *The ancient secret of the flower of life*. Part 1 – 2 / transl. from eng. due red. Sutovskej I. V. – M.: Sofia, Helios, 2001. – 247 s. ISBN 5-220-00453-0
10. Zenin S. V., "Water - guardian and translator of information". The journal "Bulletin" (Sverdlovsk reg.).
11. Landau L. D., Lifshitz E. M., *Field theory* 5th ed. – M.: Science, 1967 - 460 s. (Theoretical physics, d. II.). ISBN 5-02-014420-7
12. Menskij M. B., *Quantum mechanics: new experiments, new applications and new formulations of old questions* // Successes of Physical Sciences. – 2000. – T. 170.
13. Nefedov E. I., Protopopov A. A., Semencov A. N., Jašin A. A., *The interaction of physical fields with a live substance*. – Tula: TŠU, 1995.
14. Tichoplav V. Y., Tichoplav T. S., *Physics of faith*. Sankt – Peterburg, ID „Ves“ 2001.
15. Talalayeva G. V., *Current approaches to forecasting the failure of adaptation processes in workers working on hazardous workplaces*. The magazine "Russian Folk Medicine" (theory and practice) №6/2000, str. 12 – 14, №1/2001, str. 13 – 16
16. Siťko S. P., Janenko A. F., *Direct registration of unbalanced electromagnetic radiation of man in mm-band* // Physics of the living. – 1997. – D. 5, N2.
17. Siťko S. P., Mkrťčjan L. N., *Introduction to quantum medicine*. – Kiev : „PATTERN“, 1994. – 145.
18. Slatinskaya L. Y., "Assessment and correction of human homeostasis imbalance with foodstuffs individual selection taking into account the date of birth." Scientific Report for obtaining the scientific degree of Doctor RAPV. Omsk. 2007.



dōTERRA®

Independent Product Consultant

CPTG Certified Pure Therapeutic Grade®

Essential Oils

"Pure essential oils are appealing to a wider audience because of their potency, safety, and affordability. CPTG Certified Pure Therapeutic Grade® essential oils are highly regarded for their ability to address everything from serious infections to everyday health challenges,"

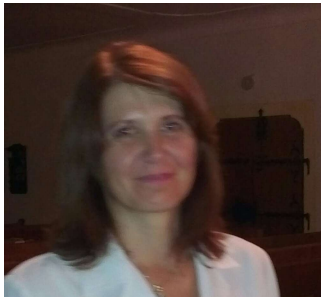
said Dr. David K. Hill, doTERRA's Chief Medical Advisor

Essential oils doTERRA – for connecting traditional and alternative medicine, is committed to sharing the life-enhancing benefits of CPTG Certified Pure Therapeutic Grade® essential oils and essential oil-enhanced wellness products with the world.



For details, please visit www.doterra.com
or dial +421 907 718 958 or +421 948 335 011

Editorial office is not responsible for the content of advertisements.



**Theoretical Basis for the Diagnostic Process in
the MKBD-S Questionnaire (Korngold-Beinfeld
Questionnaire Modified by the Author of the Article)
Zlatica Solárová M.P. PhD.**

Abstract

The author describes theoretical principles of assessment of results gained from a modified acupuncture questionnaire devised by Korngold and Beinfeld (MKBD-S) and provides a detailed analysis of results which may potentially be used in system acupuncture. The research is based on the author's year-long experience with the MKBD-S questionnaire and the classification of its findings. The author analyzes in detail the modification of the questionnaire, its evaluative possibilities which seem to be largely beneficial in terms of diagnostics and fast feedback between the therapist and the patient as well as its use in a complex, multi-level diagnostics. To showcase the classification of results of the MKBD-S questionnaire, the author offers an illustrative casuistics.

Keywords: MKBD-S (Modified Korngold-Beinfeld Questionnaire according to Solárová), complex acupuncture diagnostics, pentagram, algorithm, hyper-compositional pressure, decompositional pressure

Introduction

The couple doctors Mr. E.Korngold and Mrs. H. Beinfeld, pioneers in acupuncture on the American continent, were also the first to explore and verify the acupuncture diagnostics through questionnaire

methods with a classic pentagram being the common diagnostic method. Our modification of their questionnaire lies in the assessment of results gained from the questionnaire, using new classification criteria. Judging from our experience, these can substantially increase the diagnostic value of the questionnaire. One of the many benefits of the modified assessment is a complex level analysis which is not explicitly assessed in the original questionnaire. Another benefit is the qualitative and quantitative comparison between the somatic, psycho-regulative and complex level (Solárová, 2011). This is a possible way how to extend the limits of complex acupuncture diagnostics and objectification of results in the light of modern scientific knowledge.

Material and methodology

The analysis of relations and regularities in the acupuncture system projected in pentagram constitutes the basis of a multi-level diagnostics through the questionnaire. Some of the results have already been mentioned in the earlier issues of this publication (Solárová, 2013).

Diagnostic limits expressed in the pentagram projection can be extended through a statistical assessment of results gained through the questionnaire (Solárová, Slobodníková, 2011). Likewise, further causalities of this assessment with either qualitative or quantitative value are described. Along with other information contained in



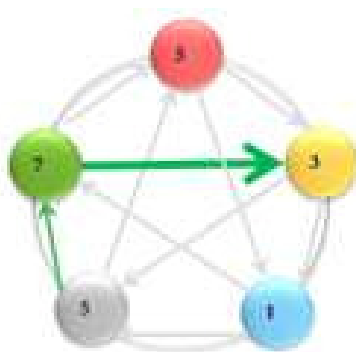
pentagram, possibilities of further projections in a complex diagnostics are improved.

We are offering a modified classification of selected types of malfunctions, their definition and interpretation of their assessment through the MKBD-S questionnaire. We shall describe other types of malfunctions in the next parts of this study.

Pressure – a vector of the information flow between two elements determining a pathological relationship. Hyper-compositional pressure may be defined as a physiologically oriented vector (in the direction of bearing and control) in the pentagram, determining mainly a quantitative type of malfunction (Picture 1). Decompositional pressure is oriented in the opposite direction in relation to the physiological vector, determining a qualitative malfunction (Picture 2). While the hyper-compositional pressure is always oriented in the “physiological” direction, the decompositional pressure is always oriented in the opposite direction.

In both cases we may see a malfunction:

- a) malfunction of dynamics, mainly of the Yang type – with two consecutive elements
- malfunction of stability, mainly of the Yin type – relationship of control (Picture 1 & 2).

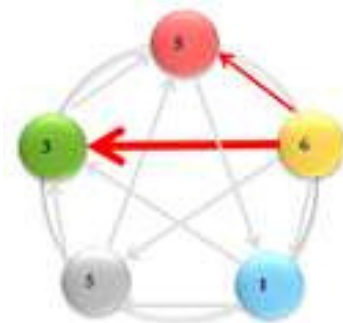


Picture 1: Malfunction in pentagram hyper-compositional pressure

¹ Algorithm is an effective method expressed as a finite list of well-defined instructions for calculating a function. (Wikipedia, 2014)

Legend:

- green vectors – hyper-compositional pressure
- vector between 5 and 7 – malfunction of the Yang type mainly
- vector between 7 and 3 – malfunction of the Yin type mainly



Picture 2: Malfunction in pentagram – decompositional pressure

Legend:

- red vectors – decompositional pressure
- vector between 6 and 5 – malfunction of the Yang type mainly
- vector between 6 and 3 – malfunction of the Yin type mainly

Algorithm¹ - malfunction in three consecutive elements, the first element being initiatory, the second one being peak and the third one transitory. With algorithms the type of malfunction is more complex with a **prevailing malfunction in dynamics** (mainly of the Yang type).

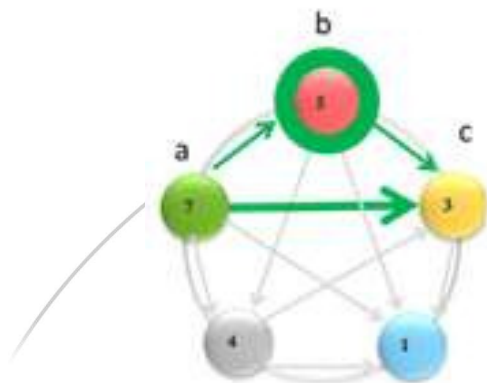
We differentiate between three types of algorithms:

1. Hyper-compositional algorithm
2. Decompositional algorithm
3. Turbulent algorithm
 - a) hyper-compositional
 - b) decompositional



4. Paired algorithm – two consecutive algorithms building a pair

1. Hyper-compositional algorithm – malfunction in three consecutive elements with a physiological vector, but excessive pressure; it is a quantitative type of malfunction. The malfunction in dynamics prevails, but the maximum difference is in the stabilization component (the relationship of control), which equals the sum of the dynamic components. It is defined by the relationship $(a-b) + (b-c) = a-c$, with elements defined according to their positions as follows: a – initiatory, b – peak, c – transitory element. The greatest pressure is put on the transitory element (Picture 3).



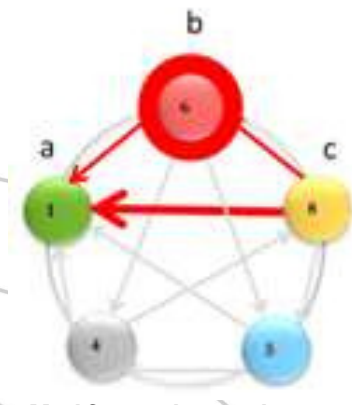
Picture 3: Malfunctions in pentagram – hyper-compositional algorithm of the Fire element

Legend:

Algorithm of the Fire element, it is a quantitative type of malfunction, with a prevailing malfunction of the Yang type, but the maximum difference is in the stabilization component (the relationship of control between the numbers 7 and 3).

(The algorithm is named according to the peak element – second in order marked 5 and circled in green).

2. Decompositional algorithm – malfunction in three consecutive elements without a physiological vector; it is a qualitative type of malfunction. The malfunction in dynamics prevails, but the maximum difference is in the stabilization component (the relationship of control), which equals the sum of the dynamic components. It is defined by the relationship $(c-b) + (b-a) = c-a$, with elements defined according to their positions as follows: a – initiatory, b – peak, c – transitory element. The greatest pressure is put on the initiatory element (Picture 4).



Picture 4: Malfunctions in pentagram – Decompositional algorithm in the Fire element

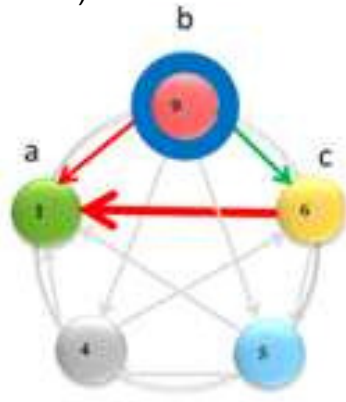
Legend:

Algorithm of the Fire element, it is a qualitative type of malfunction, with a prevailing malfunction of the Yang type, but the maximum difference is in the stabilization component. (The algorithm is named according to the peak element – second in order marked 6 and circled in red).

3. Turbulent algorithm – its vectors do not share an identical direction. The ratio of these directions is two to one, while two identical vectors determine the characteristics of the algorithm.



4. Turbulent decompositional algorithm – malfunction in three consecutive elements. It is a combination of qualitative and quantitative types with a prevailing qualitative malfunction. The malfunction in dynamics prevails, with the maximum difference in the stabilization component (the relationship of control) equaling the difference of differences in the dynamic components. It is defined by the relationship $(a-b) - (c-b) = a-c$ or $(b-a) - (b-c) = c-a$, with elements defined according to their positions as follows: a – initiatory, b – peak, c – transitory element. The greatest pressure is put on the transitory element (Picture 5).



Picture 5: Malfunctions in pentagram – Turbulent decompositional element of the Fire element

Legend:

Algorithm of the Fire element, it is a combination of a qualitative and quantitative type of malfunction, with a prevailing malfunction of the Yang type and the maximum difference in one of the dynamic components of the algorithm. (The algorithm is named according to the peak element – second in order marked 9 and circled in blue).

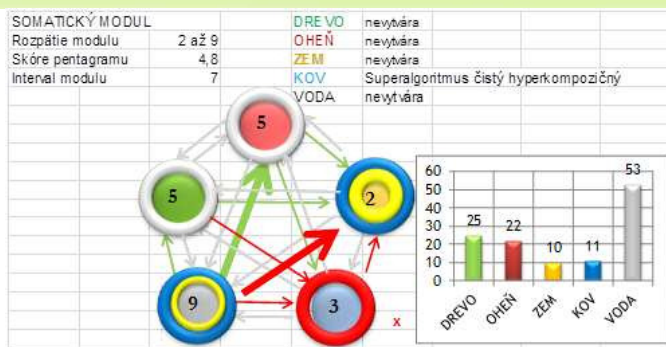
Casuistics

A female patient, aged 61, retired, used to work in

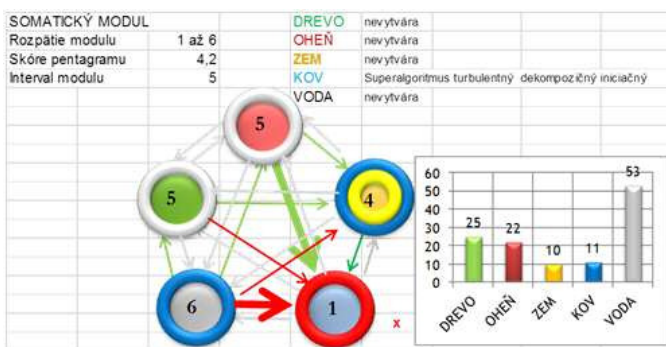
business, currently living in a second marriage. According to the classification of the traditional Chinese medicine she is characterized by the FIRE element in its Yin form and the WOOD branch. Three years ago she got pain in the right side of the lumbar area. She has recently been diagnosed with hypertension. She used to suffer from frequent uroinfections and had problems with thermoregulation. Also, she used to suffer frequently from nephritis. It was a strenuous period when she was going through divorce proceedings with her first husband and her otherwise prosperous firm went bankrupt. In 2013 a tumor was found on her left kidney, and she had a nephrectomy surgery without medicamental treatment. Despite the surgery the dull pain did not subside and the relief was only temporary. The psycho-regulative level was dominated by a lengthy solving of her problematic relationship with her second husband's daughter, her caring for her mother and a temporarily negative communication between her and her current husband. According to her medical history, she has had several surgeries: childbirth by caesarean section, appendectomy and hysterectomy. In the examination all her scars were found active.

Results

Somatic findings in the MKBD-S questionnaire before and after two acupuncture treatments (Picture 6 & 7).



Picture 6: Somatic module before the therapy – MKBD-S questionnaire

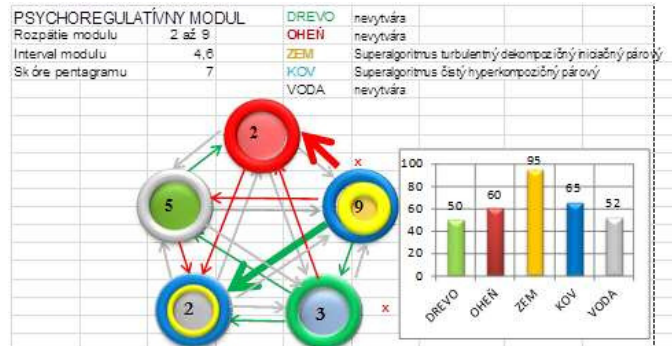


Picture 7: Somatic module after the therapy – MKBD-S questionnaire

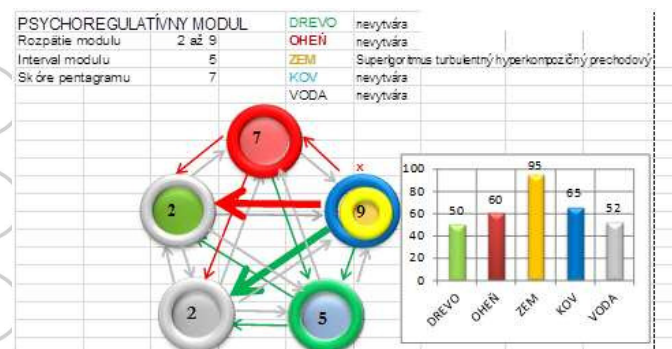
Having analyzed relationships in the somatic modules of the questionnaire before and after the therapy, we found the following changes:

- loss /harmonization/ of the maximum disbalance, reduction of the module's range, harmonization of the decompositional pressure
- harmonization in the somatic module in the WATER element: improvement of mobility, subsidence of the lower back pain
- improvement of the score indicators of the WATER element (score = quantitative evaluation of an element expressed in percentiles), and of the METAL element

Psycho-regulative findings in the MKBD-S questionnaire **before and after two acupuncture treatments** (Picture 8 & 9).



Picture 8: Psycho-regulative module before the therapy – MKBD-S questionnaire



Picture 9: Psycho-regulative module after the therapy – MKBD-S questionnaire

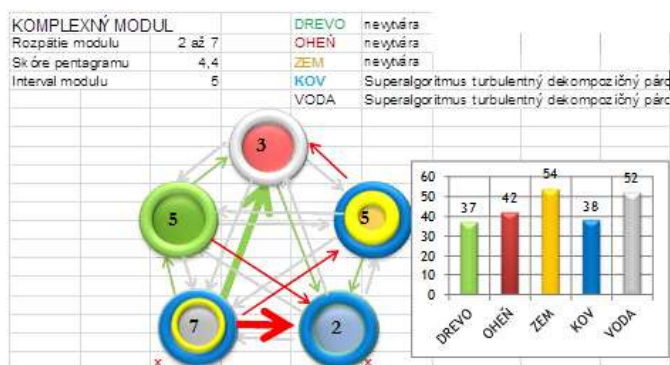
Having analyzed relationships in the psycho-regulative modules of the questionnaire before and after the therapy, we found the following changes:

- invigoration of elements
- WATER element – reduction of phobias and anxieties
- FIRE element – finding joy in the little things, optimism
- METAL element – disappearance of the METAL algorithm – aware of the need to solve her relationships

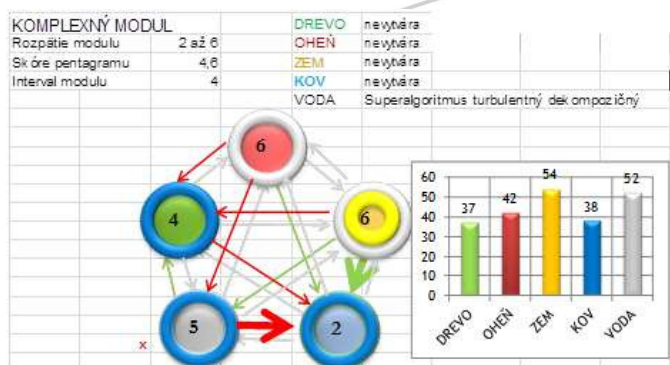


- absence of the maximum disbalance in the WATER element – more talkative, approachable, open

Complex findings in the MKBD-S questionnaire before and after two acupuncture treatments (Picture 10 & 11).



Picture 10: Complex module before the therapy – MKBD-S questionnaire



Picture 11: Complex module after the therapy – MKBD-S questionnaire

Having analyzed relationships in the complex module of the questionnaire before and after the therapy, we found the following changes:

- harmonization of the superalgorithm of the METAL element
- disappearance of the maximum disbalance in the WATER element as a consequence of the harmonization of relations, reduction of the module's range

Comparison of the somatic, psycho-regulative and complex module **before the therapy** based on current knowledge:

The complex module represents a summary of malfunctions in the somatic and psycho-regulative modules. The originator of both pressures is the WATER element. The somatic module rather corresponds with the complex module. There are turbulent algorithms on the psycho-regulative level, disrupting the feeling of security, preventing an optimal solving of a problem when under considerable tension. The insight and understanding of a situation are accompanied by counterproductive fears, which are also preventing an effective solution of problems.

Comparison of the somatic, psycho-regulative and complex module **after the therapy**:

The maximum disbalance of the WATER element, which influenced the patient's clinical picture to a considerable extent, was stabilized in all the modules. The relations in the complex module improved noticeably; the algorithms of the METAL and EARTH element disappeared. The number of turbulent algorithms in the psycho-regulative module decreased, which is proved by a harmonization of relations. The process of harmonization of the emotional component of the FIRE element as well as a shift towards verbalization and understanding were initiated, which got manifested in the dynamics in the WATER element. Insight into the situation and an overall picture are not available yet, which is proved by a turbulence in the WOOD element. The pain in the somatic module, which the patient suffered before the therapy, disappeared; the



immunity component needs further treatment, which is proved by a turbulence in the METAL element.

Fast improvement of the patient's somatic condition (within one month) and the disappearance of pain affected the psycho-regulative level and supported harmonization of both systems. The patient is aware of the need to change her attitudes towards her husband and her husband's daughter.

Discussion

A classic pentagram is the most common historical planimetric model showing relations among elements. The analysis of relations and connections in a pentagram may show merely the facts, which the pentagram is able to project. Despite the complexity of this kind of evaluation, it does not reflect a whole on all its levels (e.g. the vertical relations). It is a characteristics applicable to all kinds of assessment, therefore also to diagnostics. It is also true that every part contains a whole, **but with restrictions**, which may be seen on the model (Solar, J. 2011).

Conclusion

Based on a selected clinical casuistics, we analyzed and interpreted the results of the MKBD-S questionnaire devised by Beinfield and Korngold according to our modification of the assessment of results. We applied some theoretical knowledge described in the first part, demonstrated the methodology of the evaluation of relations in the pentagram and introduced further relations. The results form the basis for a complex multi-level diagnostics, while improving feedback between the therapist and the patient.

Zlatica Solárová M.P. PhD.

Centrum akupunktúry

Ivánska cesta 23

Bratislava

Slovakia

solarova.zlatica@gmail.com

Bibliography

1. Beinfield, H.- Korngold, E. 1992. *Between Heaven and Earth. A guide to Chinese medicine*. New York : Ballantine Books The Random House Publishing Group, 1992. ISBN 0-345-37974-8.

2. Solár, J. 2011. Hranice poznania dnešnej vedy. In *Zborník abstrakov XV. Lekársky kongres naturálnej medicíny*. Bratislava:LSNM, 2011. ISBN 978-80-970500-1-6.

3. Solárová, Z. 2011. *Dotazník v akupunktúrnej diagnostike a jeho vzťah k onkologickým ochoreniam prsníka*. Bratislava: VŠZaSP sv. Alžbety, 2011. Dizertačná práca.

4. Solárová, Z. 2013. *Diagnostické možnosti a perspektívy akupunktúrneho dotazníka podľa autorov Korngolda a Beinfieldovej*. Bratislava: In Akupunktúra a naturálna medicína Bratislava:LSNM, 2013, 1. ISSN 1339-4703.

5. Solárová, Z.- Slobodníková, J. 2011. Dotazník-psychika a nález na prsníku. In *Mammo Tren-d 2011. VII. medzinárodná pracovná konferencia mammológov*. Trenčín: TnUAD, 2011. ISBN 978-80-8075-490-7.

6. Wikipédia. 2014. *wikipédia* [Online] 2014. . [Dátum: 2. január 2014.] <http://sk.wikipedia.org/wiki/Triplet>.

7. Wikipédia. 2014. *wikipédia*. [Online] 2014. [Dátum: 2. január 2014.] <http://sk.wikipedia.org/wiki/Algoritmus>.



New approach for evaluation of physiological properties of honey

RNDr. Katarína Bíliková, PhD.

Abstract

Honey bee products have long been evaluated basing on properties defined by

chemical, physical properties. Nowadays, it is generally understood that quality of honeybee products should be defined in terms of a variety of dynamic functions of their individual components. We have found that apalbumin1, the major protein of royal jelly (RJ), is authentic protein of honey and is responsible for physiological properties of honey, therefore can be a suitable marker for determination of authenticity and quality of honey. A new enzyme-linked immunosorbent assay (ELISA) was developed for quantification of apalbumin1, using specific polyclonal anti-apalbumin1 antibody. The method has a potential of wide application to proving the identity of honeys, revealing their adulteration with low-cost syrups and for quantitative determination of the apalbumin1 in honey, pollen and RJ. The data on RJ proteins and peptides will serve as a basis for better understanding of healing properties of honeybee products as the components of functional foods. Moreover, multifunctional potential of RJ proteins and peptides can also be utilized in apitherapy, pharmacy and medicine.

Keywords: Honeybee, royal jelly, honey protein, physiological properties, antimicrobial proteins

Introduction

Bee products - honey, royal jelly (RJ) and bee pollen - belong to the extraordinary components of human nutrition and are used in pharmaceutical and cosmetic industry. These products contain physiologically active substances of honey bee and plants origin. Physiologically active components of floral origin – phytochemicals, are mostly present in propolis, the honeybee sealant. In honey they are present in traces only and their occurrence depends on the floral origin of the nectar taken from flowers (Bortolotti et al, 2011).

The most rich of honeybee origin bioactive compounds is RJ, the honeybee larval food that has been accepted and broadly used as a health promoting substance; a remarkable nutrient developed in nature in the process of evolution. Major and the most attractive bioactive compounds of RJ are apalbumins (Bilikova & Simuth, 2006) the honeybee specific proteins that are the main proteins of honey as well. The main function of these proteins is nutrition, because of high content of essential amino acids (Schmitzova et al., 1999), but they also participate in defense mechanisms of honeybee larvae against microbial pathogens (Bilikova et al, 2001). Moreover, in the physiological and genetic mechanisms of the behavioral transition, which include large scale changes in hormonal activity, metabolism, and processing, neural architecture, learning ability, memory and gene expression is accompanied by presence proteins of RJ (Kucharski et al, 1998). The recent discovery that RJ-proteins can act as



immunomodulators, suppressors of allergic reactions, their anti-hypertensive and proliferation stimulatory properties opened a new era in application of RJ and honey in medicine (Tonks et al, 2001, Peixoto et al, 2009).

Therefore the standardization of the RJ proteins is very actual and necessary. Our systematic molecular-biological research of the individual RJ proteins indicates, that they are responsible for many healing properties of RJ and honey, thus, they can be used as suitable markers for standardization of honey and RJ.

Basic data on honey

Honey contains 79.5 mass % of saccharides, 17.2 mass % water, 0.05-0.79 mass % proteins and also other components (White et al., 1978). Until now there were found especially in the honey the enzymes: glucose oxidase, catalase, α -glucosidase and β -glucosidase and it was confirmed their bee origin (Doner, 1991). Except these mentioned components the honeys possess different microelements, vitamins and plant metabolites present in plant nectars. There were still identified more than 100 different organic compounds present in slender amount in honey, characteristic for the proper kind of nectar (Maga, 1983).

The quality of honey is qualified according to aroma, clarity, wetness, color, dry weigh and saccharide determination by polarimetry. It occurs sporadically that on the market is possible to find also so-called not original honey containing saccharose as main component, while the genuine honey contains mainly monosaccharides - glucose and fructose. In food technology some producers started recently with

the use of some biochnologically prepared inexpensive enzymes e.g. invertase, which converts disaccharide saccharose to monosaccharides (glucose and fructose), and then is the polarimetric controll of honey authenticity insufficient. E.g. the cheap maize syrup (mollasse) by action of the enzyme glucose isomerase will contain similar ratio of glucose and fructose as it is in original honey. It was also developed mass-spectrophotometric method by which on a basis of stabile carbon isotops $^{13}\text{C}/^{12}\text{C}$ (Donner, 1970) it was found out that original honey possess lower ratio of these isotopes as maize syrup. Another method for determination of the authenticity of honey is the determination of glucose-oxidase activity (White, 1986). Recently there was used the method of differential thermic calorimetry (Cordella, 2002) for testing of honey falsification. These methods are reliable, but require expensive chemicals and special laboratory equipment with qualified service; the sample preparation is time consuming and for routine laboratory praxis are these methods not (hardly) acceptable. Therefore the control of honey, as an ingredient in food products, is performed only seldom and in most cases is not realized at all.

Royal Jelly proteins are regular components of honey

The proteins are important honey component and their content varies from 0,05 to 0,79% (White, 1978). On the other side, the honey represents one third of dry mass of royal jelly. It means the quality of larval diet depends also on quality of honey as a source of nutrition and energy and as important defensive factor of



developing larvae against microbial pathogens.

The most specific constituent of honey are RJ proteins with dominance of apalbumin1, the major protein of RJ (Hanes & Simuth, 1992, Simuth 2009). The proteins of RJ are not only exclusive nutritive proteinous component but they are secreted by honeybee into its products could be characterized as a specific phenotype of honeybee colony. We have found, that these proteins are regular components of honey and bee pollen. Thus, honeybee secretes RJ proteins into their own food that could induce self-defense mechanisms in honeybees mainly during larval development.

Certain properties of the RJ proteins might play a role in cytokine-induced activation of genes important for immune response of honeybees and humans. It was corroborated by many experiments that in these processes TNF- α could play a pivotal role as the factor participating in regulation of important cellular processes such as cell proliferation and inflammation. The question is, which components of RJ could participate in these processes? We have found that apalbumin1, apalbumin2, and RJ peptide - apisimin induce release of TNF- α in mouse macrophages (Šimúth et al, 2004). Apalbumin1 is likely to promote liver regeneration and may have a cytoprotective action on hepatocytes. It was shown that apalbumin-3 could exhibit potent immunoregulatory effects in in vitro and in vivo. (Okamoto, et al, 2003).

Until now it is impossible to verify presence of RJ and honey in many products claiming their content by simple routine method. In the light of these indications was proposed that the amount of apalbumin1 in honey and other honeybee

products could be used as markers for evaluation of their physiological potential and authenticity.

Quantification of apalbumin1 in honey by ELISA

We found that honey and bee pollen contain RJ proteins ranging in molecular mass from 3 to 90 kDa corresponding to the spectrum of proteins and peptides presented in native RJ with dominance of apalbumin1, the major RJ protein (Fig. 1A). Western-blot analysis using specific polyclonal antibodies against recombined apalbumin1 confirmed our previous finding that the 55 kDa protein with N-terminal amino acid sequence N-I-L-R-G-E corresponded to apalbumin1 (Fig. 1B).

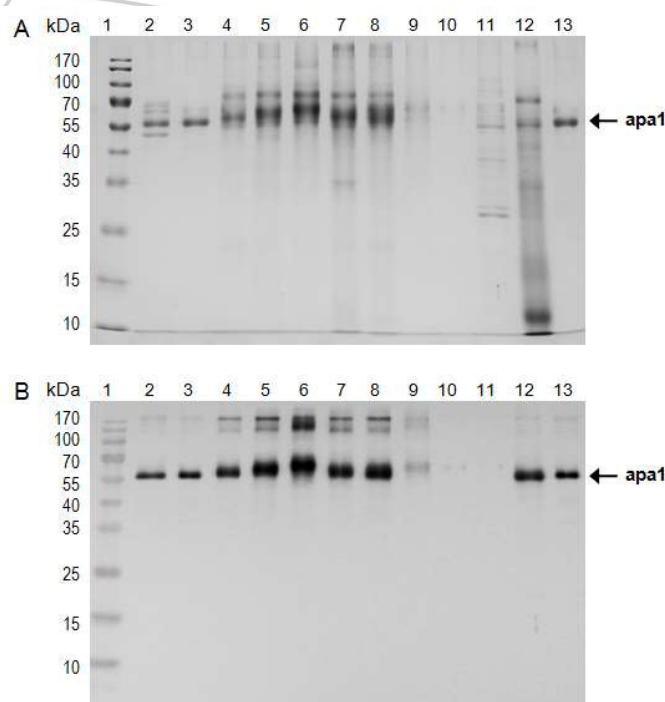


Figure 1: Electrophoretic profile of some honey and nectar samples and immunochemical detection of apalbumin1 in the samples. 12% SDS-PAGE Coomassie brilliant blue staining (A) and immunochemical detection of apalbumin1 by



polyclonal rabbit anti-apalbumin1 antibody (B) in honey samples, nectar and pollen. Lane 1. – protein MW marker, lane 2. – royal jelly, lane 3. – apalbumin1, lane 4. – acacia honey, lane 5. – linden honey, lane 6. – chestnut honey, lane 7. – rapeseed honey, lane 8. – dandelion honey, lane 9. – saccharose syrup honey, lane 10. – artificial dandelion honey, lane 11. – acacia nectar, lane 12. – pollen, lane 13. – apalbumin1.

With regard to abundance of apalbumin1 in honey we have developed enzyme ELISA for its quantification (Bilikova & Simuth, 2010). The limit of detection for apalbumin1 amounted to 2 ng/ml. The concentration of apalbumin1 in different honeys demonstrates variability originated mainly in botanical origin of the samples (Fig. 2).

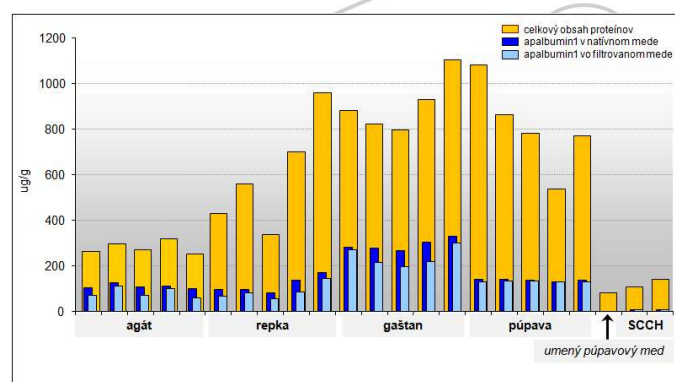


Figure 2: Apalbumin1 in native and filtered honey samples of different floral origin in comparison to total protein content of the honey sample. Apalbumin1 content in honeys of five floral origin are presented: acacia, rapeseed, chestnut and dandelion in relation to saccharose syrup honeys (SCCH) and artificial dandelion honey.

The general view on the total protein and apalbumin1 contents in honeys is showed in Table 1. The highest content of apalbumin1 was

determined in chestnut honey in comparison to acacia and rapeseed honey. The average of apalbumin1 in floral honeys (147 g/g) was 20 times higher than in saccharose syrup honey (SCCH). The filtration of honey by using 0,8 m membrane filter have no significant influence on of apalbumin1 content of honey (Fig. 2).

This new sophisticated immunochemical method can be easily performed for detection of adulteration of honey based on dilution of honey by water addition, and extension with sugar and syrups (e.g. corn syrup, high fructose corn syrup) or bee feeding with sugars and syrup or artificial honey. The method is simple, small amount of honey sample is needed for detection of its authenticity, no needs any preliminary treatment of the honey sample.

Conclusion

We are entering in the post-genome era in which honeybee proteins are on the way to be recognized as an important model for the study antimicrobial defense, immunity, nutrigenomics, allergic reaction, development, mental health, longevity.

Determination of physiological capacity of honey based on authentic bee proteins and peptides in honey provide a new possibility to characterize honey exactly. Honey is effective antimicrobial agent that could help reduce some of the current crucial problems that are promoting antibiotic resistance of clinical microbial pathogens. There is an urgent need honey for new, effective agents in topical wound care, and selected honeys show potential in this regard.



Apalbumin1 as the major protein component of honey could be used as potential marker for physiological evaluation of honey and other honeybee products as a functional food by monitoring cytokines production in a suitable in vitro system.

Medical-pharmacological effects of honeybee products will be precisely evaluated and quantified on the basis of quantity of the individual proteins of RJ present in the used diet. The advantage of presented method is the fact, that the presence of RJ proteins in honey, royal jelly, pollen, in food and other products is not artificially imitable, as it is at polarimetric sugar estimation in honey. Immunochemical detection of RJ proteins is the most convenient mode of the authenticity control of bee products, resp. detection of bee products in food and others industrial articles.

Katarína Bíliková

Institute of Forest Ecology, Slovak Academy of Sciences, Zvolen

Department of Molecular Apidology, detached workplace, Bratislava

e-mail: bilikova@savzv.sk

Bibliography:

1. BÍLIKOVÁ, K.- ŠIMÚTH, J. 2006. Members scientific Consortium. *Insights into social insects from the genome of the honeybee Apis mellifera*. Nature 443, 931-947.

2. BÍLIKOVÁ, K.- ŠIMÚTH, J. 2010. J. Agric. Food Chem. 58, 8776-8781.

3. BÍLIKOVÁ, K.- WU, G. - ŠIMÚTH, J. 2001. *Apidologie* 32, 275-283.

4. BORTOLOTTI, L. - TRUCHADO, P. - ALLENDE A. - KAATZ H.H. - BERTELLI, D. - PLESSI, M. - BÍLIKOVÁ, K. - ŠIMÚTH, J. - MORITZ, R.F.A. - BARBEAN, F.A.T. - SABATINI, A.G. 2011. The quality of honey for bees and man. In: „*Bees in Europe and Sustainable Honey Production* (Behrens, D., and Moritz, R.F.A., Eds.), Nova Science Publishers. New York, pp. 6-61.

5. CORDELLA, C.- ANTINELLY, J. F.- AURIERES, C.- FAUCON, J. P.- CABROL-BASS, D.-SBIRRAZZUOLI, N. 2002. *Food. Chem.* 50, 203-208.

6. DONER, L. W. 1991. *Food Enzymology*, Vol. I., ed. Fox, Elsevier Science Publisher LTD, New York, 143-161.

7. DONNER, L. W.- KUSHNIR, I.-WHITE, J. W. JR. 1970. *Anal. Chem.* 51, 224-232.

8. HANES, J. - ŠIMÚTH, J. 1992. *J. Apicult. Res.* 31, 22-26.

9. KUCHARSKI, M. - MALESZKA, R. - HAYWARD, C. D. - BALL, E. E. 1998. *Naturwissenschaften*, 85, 343-346.

10. MAGA, J. A. 1983. *Lebensmittel. Wiss. Technol.* 16, 65-68.



11. OKAMOTO, Y. - TANIGUCHI, T. - KUNIKATA, K. - KOHNO, K. - IWAKI, M. - IKEDA, N. 2003. *Life Sciences* 73, 2029–2045.
12. PEIXOTO, L.G. - CALÁBRIA, L.K. - GARCIA, L. - CAPPARELLI, F.E. - GOULART, R.L. - ESPINDOLA, F.S. 2009. *Journal of Insect Physiology*. 55, 671-677.
13. SABATINI, A.G. - MARCAZZAN, G.L. - CABONI, M.F. - BOGDANOV, S. - DE ALMEIDA-MURADIAN, L.B. 2009. *Journal of ApiProduction ApiMedical Science* 1, 1-10
14. SCHMITZOVA, J. - KLAUDINY, J. - ALBERT, Š. - SCHRÖDER, W. - SCHRECKENGOST, W. J. - HANES, J. - ŠIMÚTH, J. 1998. *CMLS*, 54, 1020-1030.
15. ŠIMÚTH, J. 2001. *Apidologie*, 32, 69-80.
16. ŠIMÚTH, J. - BÍLIKOVÁ, K. - KOVÁČOVÁ, E. - KUZMOVÁ, Z. - SCHROEDER, W. 2004. *J. Agric. Food Chem.*, 52, 2154-2158.
17. TONKS, A. - COOPER, R. A. - PRICE, P. C. - MOLAN, P. C. - JONES, K. P. 2001. *Cytokine*, 14, 240-242.
18. WHITE, J. W. JR. - RUDYJ, O. N. 1978. *J. Apic. Res.* 17, 234-238.
19. WHITE, J. W. JR. - MELOY, E. W. - PROBST, J. L. - HUSER, W. F. 1986. *J. Assoc. Off. Anal. Chem.* 69, 652-654.



Iplikator

Iplikator is designed for individual use. Its idea finds its roots in traditional Chinese medicine, and can be related to the practice of "MEI HUA CHENG" also known as "Peking Hammer". The ipikator brings relief to sufferers of joint, muscle and back pains, insomnia. It also enhances the body's regeneration and increases vitality. The ipikator releases the body's natural resistance to pain. The range of uses of the ipikator is vast, in both prevention and treatment.

Benefits:

Simplicity of the used technique.

Possible absence of specialist in acupuncture.

Any frequency of treatment according to the patient's condition and consideration.

Immediate effect.

It is suitable accompaniment of range of physical therapy.

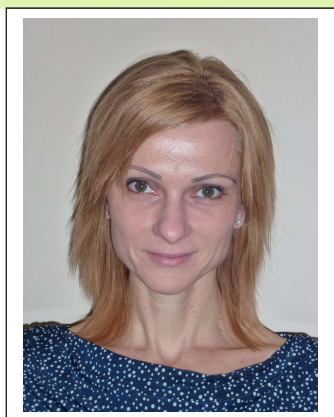
www.ipikator.eu ipikator@dodo.sk

It has been used successfully to:

- ✓ prevent, eliminate or reduce pain radiculitis or osteochondrosis
- ✓ eliminate inflammation and joint pains, ncrease flexibility of joints
- ✓ eliminate muscular crampsОтстранение
- ✓ overcome sleeplessness



Editorial office is not responsible for the content of advertisements.



Acupuncture in psychiatric practice

Katarina Loncková, M.D.

As most doctors trained in the „Western medicine“ , I have enrolled a course of acupuncture with an

idea of applying this type of „Eastern medicine“ to the approach used in Western Europe – i.e. to treat the symptoms. As a doctor – psychiatrist, I felt the need to expand the options of helping patients in mental area as well as somatic area above the limits of drug treatments.

I meet with elders as well as young patients suffering from one or a combination of more somatic diseases according to the Western style diagnosis. These patients take a combination of different drugs that more or less mitigate the symptoms of the disease.

The patients are sent to a psychiatrist after numerous medical examinations without a clear explanation of their problem's origin. The somatic doctors evaluate these difficulties as functional – i.e. difficulties without any organic correlate, in which there is the presumption of psychogenic etiology (psychological trauma, negative emotions, chronic stress, etc.). The expression „functional“ bears a negative undertone saying that: „There is nothing wrong with the patient, he is healthy“ or „He is to blame himself“. Although, I have often found a correlation between the patient's problem and a particular psychological trauma, there is still an uncertainty about the

problem's formation, non-specific therapeutic treatment, and especially the ambiguity of the treatment's results.

I also perceived the insufficiency of medical therapy (which still remains the only possibility of helping the patient with so-called „endogenous“ psychiatric disorders- for example psychotic disorders as schizophrenia, bipolar affective disorder and etc.) particularly in so-called neurotic disorders, which include the whole range of anxiety disorders, phobic and somatoform disorders as well as in a spectrum of depressive disorders. Drug treatment gives only some relief of the symptoms and without a therapy (therapy is a necessity, but it is also limited by a patient and a therapist), it is likely to result in a long-term treating with a partial effect and without the possibility of being really „cured“. I often say that patients who overdose anxiolytics - benzodiazepines were like patients with pneumonia taking cough syrup and anti-inflammatories, i.e. they will reduce the symptoms but until they cure the pneumonia itself, the symptoms will not disappear. Even recently, I would consider „the pneumonia“ to be the imbalance in the serotonin system of the human brain that explains the depressive and anxiety disorders and I would fight for this statement from the bottom of „my psychiatric heart“. The fact is that the drugs stabilizing the serotonin system significantly reduce the symptoms of such diseases.



At the beginning of my attendance of a basic course in acupuncture at the Acupuncture Center in Bratislava it was difficult for me to confront my long-established and fixed methods of diagnostic and therapeutic view with a completely different (but somehow subconsciously appreciated) holistic approach. I must admit that my expectations of helping patients in a way that „when the medication does not work, I will try to use needles“, have not materialised. Thanks God! The range of this medical domain and mostly a high quality of our trainers offered us a new point of view and helped us understand coherence of formation and symptoms of patients' problems. For us, new ways have been opened in understanding of human life, nature and the universe. Thanks to our trainers, I begin to realise that the imbalance of the serotonin system is not „pneumonia“ that needs to be cured but it represents just one of the domino cubes of human body falling down due to the imbalance of its energoinformative system. It is just the cube that Western medicine can detect and perhaps temporarily "fix" it, but it still remains just one part of a whole. Unless we remove the energoinformative imbalance which triggered the fall down, it is impossible to reach the organism's stable state.

While acquiring a knowledge of acupuncture theory on the relationship between the Elements (with all characteristics and levels that belong to them), I realized a new possibility of a much wider view of the patient himself and coherences and development of his difficulties. I begin to perceive different-deeper level of relationship of two

constituent parts of human psyche and human somatic level instead of the "functional" concept. In the world of acupuncture it means to perceive the relationship between inner pollutants (problems on emotional level) and their impact on individual elements, their reciprocal influence and related disorders (problems on somatic level), all of which in the light of a particular problem of a particular client. In the light of full understanding of these relations, suddenly unspecific and even alibistic term „functional“ disorder gets specific and logical meaning and related acupuncture treatment. This approach increased my respect for a human being as an individual as well as awareness of a need of individual treatment of every patient.

In the acupuncture training, our trainers teach us specifically this individual approach in both areas- diagnostic and therapeutic. In the field of diagnosis, the individuality is enabled by using the sophisticated technology of TST test (Tactile Solar's test) as well as by the MKBD-S diagnostics (Korngold Modified Beinfield questionnaire due ms.Solar). We are taught that a vital part of diagnostic and therapeutic approach it is to understand the „individual story“ of a patient enabling us to at least partially understand whom we are really healing and how his story is linked to his problems . Subsequently, we can treat the „person“ not just the „symptoms“.

Me as a psychiatrist, having also a psychotherapeutic focus, I asked our main supervisor Dr. Solar how after acupuncture (its harmonization effect) to prevent repeated disharmony caused by the same mistakes,



especially in the inner pollutants. The respond was that: „An acupuncturist is like a car repair service. When a broken car comes he will fix it but it is up to the driver to drive it correctly“. To my perception, there is a certain parallel with psychiatry (although distant), when a complex patient's treatment should also include a psychotherapeutic intervention. This kind of patients' treatment is also provided at high standards at the Acupuncture Center. As also representatives of acupuncture from Korea pointed out, the acupuncture treatment itself with its holistic harmonization effect affects a human being as a whole and hence also affects his mental level.

How the acupuncture looks like in psychiatrist practice?

Psychiatrist: - half a year ago: 25 year old woman, family history:-mother died of cancer, a personal history of recurrent pancreatitis, persistent pancreatobiliary dyspepsia, ovarian cyst surgery, social history: she is one of seven children, problematic relationships within the family environment –in the field of emotional expressiveness, acceptance and creating of a secure background, three years ago, her brother died tragically, she is married- in a happy marriage, has got one healthy baby.

The patient comes with difficulties, which began about 3 years ago - when her mother got seriously ill, she took care of her in her last days. She had a feeling of compulsive stools, abdominal cramps that even used to wake her up at night. After her mother died, she felt some relief but just one month after that, her brother died

tragically - she is not able to talk about it, she often cries. She has been feeling worse over the last year. While taking drugs for pancreas, she suddenly felt that it got stuck in her throat so she had to eat and drink it down. She got petrified of suffocation, had trepidation in her hands, chills and terrible fear. These conditions often come back. She is afraid of death. Psychiatric conclusion: unspecified anxiety disorder.

Treatment-psychotherapeutic intervention, relaxing breathing exercises, recommended taking magnesium with vitamin B6.

Psychiatrist- an acupuncturist - beginner, after 3 months, the patient comes to the ambulance, feeling better, having no anxiety attacks with chills and body tingling. But she has got ovarian cysts again. She has no external stress but still feels a slight restlessness and anxiety. She has got a feeling that she cannot cope with things and she is afraid about the real cause of her problems. She still has got some problems with swallowing, while swallowing she even feels a pressure in her ears, she is afraid of her daughter suffocating. She feels a painful pressure below the left costal margin. She has passed a number of medical examinations including NMR (nuclear magnetic resonance) of abdomen, colonoscopy, all with negative results. The pain worsens during an exercise, in advance she predicts it occurring again, it constantly persists. She suffers from abdominal bloating.

There is a disorder in the element of Earth - the loss of confidence, fear, digestive symptoms, apparently with overall weakening of Earth within emotional uncertainty in her childhood and youth.

An Insight into the Acupuncture Thinking

Acupuncture in psychiatric practice

Katarína Loncková, M.D.

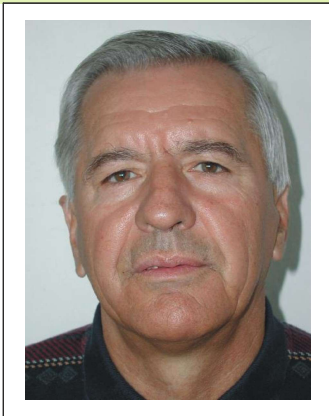


Furthermore, there is a disorder in the element of Water - problematic role of her mother, anxiety, ovarian cysts, problems in the 5th chakra. We added pulse examination, tongue examination, examination of SC (section caesarea) and laparoscopy scars, TST test examination of the therapeutic points LP 9 (spleen meridian) and VF 41 (gall bladder meridian). Treatment - LP9, VF 41, after the treatment, there was a compensation of blockade on JM as well as in the other tested microsystems. Compensation of non-sensitivity below SC scar with minimum non-sensitivity remaining on its left edge – bridging. During the treatment she feels heat spreading throughout her body, this feeling occurs locally while bridging the scar, immediate relief from the painful pressure below the left costal margin. So the somatic symptoms have been modified first. After this success I am looking forward to her next visit.

Katarína Loncková, M.D.

Psychiatric practice in Bytča

katlonc@gmail.com



Water as geological factor of the environment and its influence on humans

Prof. RNDr. František Baliak, PhD., et al

Introduction

This contribution follows the contribution, which was published on XVI. Natural medicine

medical congress in Nitra in 2012 (Baliak, Khun, 2012). In this paper, we discussed the various geological factors (geofactors) environment and their effects on humans. In the present paper we will deal with more detail on geofactors focusing **on water**, whether as geo-potential or geo-barrier in geological environment and its impact on human beings.

In general geofactors are classified to Geopotentials and Geobarriers (Matula, 1995). **Geopotentials** represent a variety of natural resources, and ways of use of geological environment, i.e. factors allowing a favorable development of human society, for example minerals, high-quality agricultural land, fresh potable or healing underground waters and the like. **Geobarriers** represent various constraints and restrictions adversely limiting the rational use of geological environment, i.e. threats to the life and activity of man (e.g., volcanic eruptions, earthquakes, landslides, floods, toxic and radiation exposure, etc.), factors reducing efficiency of construction and operation of engineering works (e.g., inappropriate foundation soil, unstable slopes, aggressive groundwater, etc.) and negative factors damaging the environment as result of human activities (e.g., subduction of undermined

area, waterlogged or dried area, groundwater contamination, etc.). This means that the geopotentials improve the quality of human life and vice versa, the geo-barriers reduce it.

From the previous follows that the water in general is the most important element of the environment. It creates natural condition for existence of living organisms including the mankind. It is also part of the geological environment, which directly influences conditions for existence and development of human society, which human use and change.

As one of the most important components of the geological environment, the water is an important environmental geofactor. The water is either geo-potential i.e. natural resource positively influencing development of society or geo-barrier i.e. barrier which limits or blocks the society development.

Keywords: Geological factors, geo-potential, geo-barriers, water, slope deformations, flooding, geodynamic processes, human life.

Water as geo-potential of the environment

From the above mentioned it is obvious that **potable and healing groundwater** are from the point of view of influence on the men the most important geo-potentials which improve quality of human live. Sufficiency of water, for example, causes a feeling of well-being, wealth and balance. Quantity and quality of these waters is closely tied with geological environment in which the waters are



accumulated and circulating. The geological environment of Slovakia, as part of Western Carpathian, provides rather favorable conditions for their occurrence. There are resources of good pore, fissure and karst water, which has the geological environment imprinted in its memory. Regarding the regional point of view the rich resources of groundwater are present in all engineering geological regions of Slovakia, with exception of some regions with claystone development of flysch zone.

Water as geo-barrier of the environment

Water as geo-barrier has important place in more groups of geological factors, which significantly limits or totally blocks useful usage of nature in favour of man. The negative action of water can cause a loss of human life, occurrence of diseases, a psychological impact and so.

1. Water as factor threatening life and work of man

In Slovakia, as well as in this group of geo-barriers, the water plays crucial role in threatening life and manmade works, especially as factor developing slope deformations of all kinds and causing river flooding.

During project of inventory of all slope deformations in the territory of Slovakia there was registered 21 190 **slope deformations** which are disrupting overall 257 591,2 hectares what is 5,25 % of total area of Slovakia (fig. 1).

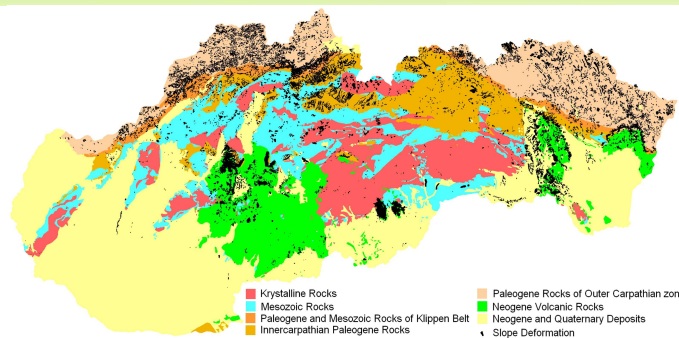


Fig. 1 Schematic geological map of Slovakia with distribution of registered slope deformations (after Kopecký et al., 2008)

Flooding by river is another factor threatening life and works of man by activity of water in Slovakia. Causes of river flooding occurrence are mainly flow rate increase in river bed after heavy rain falls, snow and ice melting, decrease of river bed flow capacity by ice or sediments and catastrophic events like landslide, water work dam collapse and so on.

Considerable scope relate to flooding have phenomena related to collapse of protective river side dikes caused by hydrodynamic influences of water (suffusion, liquefaction), for example, Danube river dike was destroyed by suffusion near village Kľočovce in 1965 (Ondrášik et al., 2011).

2. Water as factor decreasing effectiveness of construction and operation of engineering works

Rock state (consistency, volume) and **properties** (carrying capacity, strength) are being changed by activity of water, especially in the case of soils, rocks containing clay minerals and soft rocks. Groundwater is common factor intensively effecting occurrence and development many recent geodynamic processes (weathering, slope



deformations, mechanical and chemical suffusion, karst and so on.). The changes have influence on quality of foundation soil.

Hydrogeological conditions dictate conditions for performance of construction works (foundation pit drainage, foundation under the water table, measures against breaking of floor of the foundation pit by groundwater buoyancy). Occurrence of the groundwater in the zone of foundation requires number of measures in form of foundation protection against water saturation, damage of the construction by buoyancy etc. In our conditions common corrosive properties of groundwater requires special measures and construction procedure for ensuring durability and safety.

Unfavourable hydrogeological conditions mutilate buildings' hygiene and health conditions (wet environment with biological consequences) (Matula, 1995).

3. Water as factor mutilating environment by negative antropogene effects

Negative antropogene effects related to water are causing also subsidence of terrain as consequence of **extreme pumping** of groundwater. Beside subsidence of terrain the land can be exposed also to excessive drying, which has significantly negative effects on geological environment of the area (change of soil and rock humidity, disruption of natural regime of groundwater, change of quality of agricultural land and so on.). Drying of land is closely related also to swamping the land, especially as result of construction of water works.

Groundwater polluted by man activities is special geo-barrier. It can be created from high quality

groundwater by its pollution i.e. the water as geo-potential is turned by man activity on geo-barrier.

Prof. RNDr. František Baliak, PhD.

STU Bratislava, Stavebná fakulta, Katedra geotechniky

e-mail:frantisek.baliak@stuba.sk

Mgr. Martin Ondrášik, PhD.

STU Bratislava, Stavebná fakulta, Katedra geotechniky.

e-mail:martin.ondrasik@stuba.sk

Mgr. Martin Brček, PhD.

STU Bratislava, Stavebná fakulta, Katedra geotechniky.

e-mail:martin.brcek@stuba.sk

Bibliography

1. Baliak, F., Khun, M.: Geofaktory životného prostredia a ich vplyv na človeka. In: Zborník abstraktov. XVI. Lekársky kongres naturálnej medicíny. Nitra, 2012, s. 6-7.
2. Kopecký, M., Ondrášik, M., Martinčeková, T., Šimeková, J.: Atlas zosuvov. In: Enviromagazín, 2008, r. 13, MŽP SR, SAŽP Bratislava, s. 8-9
3. Matula, M.: Geológia v územnom plánovaní a výstavbe. Vyd. Príroda, Bratislava, 1995, ISBN 80-07-00771-7, 214 s.
4. Ondrášik, R., Vlčko, J., Fendeková, M.: Geologické hazardy a ich prevencia. Vydala UK Bratislava, 2011, ISBN 978-80-223-2956-9, 288 s.



FYZIOTERAPEUTICKÝ SYSTÉM TRANSKUTÁNEJ ELEKTRICKEJ NERVOVEJ STIMULÁCIE (TENS)

Princíp liečby prístrojom TENS Dm18107 spočíva v stimulácii nervu a svalu striedavým elektrickým prúdom rôznej frekvencie a priebehu. Systém je vhodný na podpornú fyzikálnu terapiu rôznych neurologických, ortopedických, interných a iných ochorení sprevádzaných bolesťou a zvýšeným alebo zníženým svalovým napätím. Analgetický účinok liečby je vysvetliteľný ovplyvnením vedenia vnímania algického podnetu (vrátková teória bolesti podľa Meltzaka a Walla), myorelaxačný účinok spočíva v podobnom princípe ako postizometrická relaxácia a tonizujúci vplyv je založený na priamej elektrickej stimulácii periférneho nervu.



Aké sú výhody?

- tlmí bolesť tam, kde iná forma tlmenia bolesti je kontraindikovaná
- možnosť aplikácie „kdekoľvek a kedykoľvek“
- odborná asistencia nie je potrebná

prim. Prof. MUDr. M. Kováč, CSc.
neurologické odd. NsP, Nové Zámky

SOLNÁ FAJKA – jednoduchý suchý inhalátor

Denným 15-20 minútovým používaním Solnej fajky môžeme priaznivo ovplyvniť:

- alergiu dýchacích ciest
- astmu
- nádchu
- zápal dutín tváre a nosa
- podráždenie dýchacích ciest zapríčinené fajčením



Choroby dýchacích ciest sú v súčasnosti na poprednom mieste výskytu v detskej i dospeljej populácii. Ide o značný nárast alergických ochorení – alergická nádcha, bronchiálna astma, chronická obštrukčná choroba pľúc a iné. Sprievodným znakom týchto ochorení v dôsledku zápalu je zvýšená tvorba hlienov, sťažené dýchanie, častejšie záchvaty kašľa, dýchavice. Na uľahčenie expektorácie hlienov okrem medikamentózneho liečby pomáha aj Solná fajka (pre deti Solný sloník). Najčastejšou indikáciou tejto zdravotnej pomôcky, ktorú som indikovala, boli pacienti s častými sínusitídami, exacerbovanými bronchitídami, bronchiálnou astmou, syndrómami dráždivého kašľa, inhaláciou škodlivých látok, tiež pacienti s fajčiarskou bronchitídou.



MUDr. L. Frajtová
Ambulancia TaPCH, Prešov

Výrobky na slovenský trh dodáva:

VitaFit spol. s r.o.

Kontakt:

00421 905 448 715 alebo 00421 2 6241 3212
www.vitafit.sk, www.epredaj.com

LIEČIVÁ MEĎ

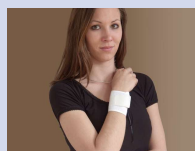
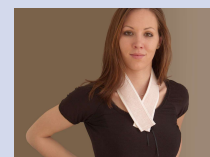
Meď je veľmi dôležitý stopový prvok. Potrebujú ju k svojej aktivite mnohé enzýmy, napríklad: lyzoxidáza, tyrozináza, cytochrómoxidáza, dopamín –b- hydroxyláza, superoxid – dismutáza, aminooxidáza. Do organizmu sa meď dostáva stravou, môže sa však vstrebať aj cez pokožku. Textilie s obsahom medi pomáhajú znižovať deficit medi v organizme – sú prostriedkom doplnkovej liečby niektorých ochorení.

Ďalšie účinky medi:

- . významnú úlohu zohráva pri zdravej tvorbe kostí, chrupavky, pokožky a kolagénu
- . ničí baktérie, vírusy a zárodky hubových infekcií
- . podporuje krvný obeh
- . zabraňuje vzniku kandidózy
- . urýchľuje regeneráciu organizmu po úrazoch, operáciách a zlomeninách.

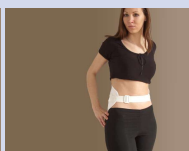
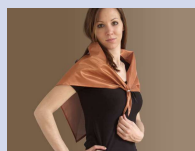
MUDr. J. Lóránth, Maďarsko

Čelenka s obsahom medi – zmierňuje bolesti hlavy, odporúča sa používať ju aj proti migréne. Pri bolestiach hlavy ju možno priložiť okolo krku – uvoľňuje kŕčovitosť svalov krku a podporuje normalizáciu krvného obehu v mozgu. Rovnako pomáha aj pri regenerácii „zlezaných“ alebo prechladnutých svalov krku.



Pás na zápästie s obsahom medi – odporúča sa nosiť ho pri bolestiach zápästia (presilenie napr. pri práci s počítačom), ďalej pri chorobách, ktoré vznikajú z nedostatku medi v organizme (málokrvnosť, osteoporóza, reumatické bolesti, Menkesov syndróm).

Šatka s obsahom medi – odporúča sa pri bolestiach krčnej chrbtice, obmedzenej hybnosti krku a pliec.



Posteľná plachta s obsahom medi – podporuje zdravý, uvoľnený spánok. Textilná s obsahom medi odráža vysokofrekvenčnú radiáciu.

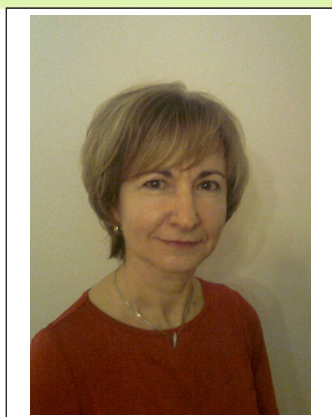
Kontraindikácie: Výrobky sa nesmú používať pri alergii na meď, pri Wilsonovej chorobe a pri zápale kĺbov!

PONOŽKY SO STRIEBROM

Tkanina s obsahom striebra je výborným vodičom tepla a elektriny, čím bráni statickému nabití. Striebro obsiahnuté v ponožkách vo forme postriebreného vlákna ničí baktérie a huby, ktoré vyvolávajú nepríjemný pach spotených nôh. Udržiava nohy v teple, vytvára ideálne prostredie pre kĺby a celkovo zvyšuje fyzický a psychický stav.

Ničivý účinok striebra na huby a baktérie bráni aj ich usídleniu vo vložke topánok.





Report from the 17th Medical Congress of Natural Medicine with Interdisciplinary Participation

Magdaléna Miklósová, M.D.

One of the most important meetings of doctors and specialists from different scientific fields is a congress

organized annually by Medical Society of Natural Medicine in cooperation with Association of Private Doctors of Slovak Republic and Czech Medical Society of Acupuncture ČLS JEP. 17th Medical Congress of Natural Medicine with Interdisciplinary participation was held on 18th-20th October 2013 in Trnava, in hotel Holiday Inn. Within the congress, the thematic workshop of Korean Medicine was held, on 21st and 22nd October, in Šamorín, in Hotel Kormorán.

17th Medical Congress of Natural Medicine was opened by Gustáv Solár, M.D., PhD., chairman of the congress and Medical Society of Natural Medicine. He welcomed the revered guests: Dr. Pil-Gun Kim, K.M.D., PhD. – president of Association of Korean Medicine, Jeong Yeonil MD. – president for international affairs of Association of Korean Medicine, Ladislav Fildán, M.D. – chairman of Czech Medical Association of Acupuncture ČLS JEP, and Ladislav Pásztor, M.D., MSc. – president of Association of Private Doctors of Slovak Republic. After short speeches of guests, the letter by Eugénia Bellová, M.D., wife of special and authorized ambassador of Slovak Republic in South Korea was read. Later, participants of the congress witnessed the

solemn act of signing the contract of cooperation between Medical Society of Natural Medicine /MSNM/ and Association of Korean Medicine /AKM/. After signing the contract, presidents of MSNM and AKM briefly but highly positively evaluated the importance of this international cooperation.

The main program consisting of 5 blocks of lectures and 2 workshops was dedicated to the following 4 topics: 1. Water and the natural medicine, 2. The latest knowledge of acupuncture, 3. Korean medicine, 4. Interdisciplinary connections of acupuncture and natural medicine.

Block 1

In the first lecture, “Possibilities, tasks and aims of Association of Interdisciplinary Studies of MSNM”, author Ing. Miloslav Žirko, PhD. introduced Association of Interdisciplinary Studies, which was formed on 5th June 2013 as a co-association of MSNM. It also exists in a form of an interdisciplinary electronic magazine “Acupuncture and the Natural Medicine”.

In the lecture “Water as a geofactor of the environment and its effects on human” /authors: Prof. RNDr. František Baliak, PhD, Mgr. Martin Ondrášik, PhD, Mgr. Martin Brček, PhD, Department of Geotechnics, Faculty of Architecture, STU Bratislava/, prof. Baliak characterized water from different aspects. He dealt with methods of using geological

Reports

Report from the 17th Medical Congress of Natural Medicine with Interdisciplinary Participation

Magdaléna Miklósová, M.D.



environment, and he also gave examples of geopotencial /drinking and thermo water/ and geobarriers /floods/.

In an interdisciplinary lecture “The disease of economical growth and its effects on society and human”, Prof. Ing. Ján Košturiak CSc. /Kraunhofer IPA/ appointed economic, financial and social symptoms of this disease in the prodromal stage and after a complex evaluation of our economic world he proposed possible treatments of this pathological state.

Block 2

Mgr. Ladislav Svršek, Mgr. Mária Marková: “Electronic version of scientific information and literature for further education and practical usage”. Mgr. Svršek gave detailed information about the on-line service OvidSP and the possibility of free access to selected information sources for the participants of the congress until 18th November 2013.

Teodor Mochnáč, M.D., PhD., from Akupunktum – Center for Acupuncture and Diabetic Foot in Nitra, in a very interesting lecture “First experiences with controlled pulse magnetopuncture” classified and in details characterized different magnets. He explained effects of magnetic radiation on human and on water. At the end, he presented his own experiences of using low-frequency magnet.

Block 3

In the introduction of lecture “Effects of activated water” /authors: Doc. Ing. Ján Brindza

CSc.¹, Michail V. Kurik², Štefan Pancurák³, Slovak University of Agriculture, Nitra¹, Institute of Human Ecology, Kiev, Ukraine², Mercim s.r.o. Prešov³/, doc. Brindza presented physical, chemical and structural characteristics of water, he analyzed molecule of water and its different dispositions in space. Further, he presented possible methods of activation of water.

Doc. RNDr. Vojtech Gajdoš CSc. From Department of Applied and Environmental Geophysics PF UK Bratislava, in an interesting interdisciplinary lecture “Water in rocky environment – from a geophysic’s point of view” mentioned some characteristics of water molecule /e.g. polarity and size of the molecule/, which determine its relationship with the environment.

Block 4

Anna Loskotová, M.D. from Clinic of ambustion and reconstruction surgery FN in Brno, in an authentic lecture “Inner model of self” in therapy of ambustion by acupuncture” explained in detail the mechanism of effects of early-applied acupuncture in treatment of ambustions /without scars/, which also applies with other oncologic diseases. She also presented her own documented results of complex therapy of ambustions.

Prof. Jana Slobodníková, M.D., CSc. From Faculty of healthcare KLVMMZ TnBUAD in Trenčín, in an up-to-date topic: “Natural medicine and mamology” emphasized increasing incidence of breast cancer, which affects 8-10% of women.



She mentioned some connections from stories of her own patients, which can be one of the possible etiologic factors of this serious disease.

Zlatica Solárová, M.P., PhD. from Center of Acupuncture in Bratislava, in an interesting lecture: „Water and its parallels in the process of diagnostics of somatics and psyche“ analyzed the process of diagnostics and characterized models in acupuncture, including the questionnaire MKBD-S, which monitors somatics and psychic of the patient in every element. In a specific case of pentagram with a dominance of water, the author drew attention to importance of relationship between the elements, whereas water is part of functional system of elements.

Block 5

The topic of the last block of lectures was Korean medicine. Jeong Yeonil, M.D., president for international affairs of Association of Korean Medicine, in his lecture after a detailed historical overview of traditional Korean and herbal medicine presented a Korean unique: acupunctures Sa-Am and Sambu. This lecture is published in the second issue of e-magazine Acupuncture and Natural Medicine.

1. Workshop - Introduction of Korean Medicine

In the first part of the workshop, Dr. Pil-Gun Kim K.M.D., PhD., president of AKM, explained basic principles of Sa-Am and Sambu acupuncture. Afterwards, in a theoretic exposition of Korean medicine Jeong Yeonil, M.D. introduced 3 categories of antic points: Yibu, Chumbu and

Sambu. After the theory, practical demonstrations of Korean medicine and treatment of some participants followed.

Workshop 2 – “Patterns, relations and models in acupuncture – the latest information”

The second workshop was led by Gustáv Solár, M.D., PhD, from the Center of Acupuncture in Bratislava. After defining the basic notions /phenomenon, condition, symbol, archetype, attractor, model/, he characterized models of elements and the relationships between the meridians. After a detailed analysis of more complex relations /YANG and YIN chaining/ and 8-grams /PA-KU FU-SI, WEN/, he presented his own models of relations between meridians: PA-KUAS1, S2 and PA-KUA universal.

After the final panel discussion, which was rich and constructive, chairman of the congress, Solár, M.D., evaluated the event as a very successful and historically a turning-point. He thanked guests from abroad and everyone present for participation and he invited all for a two-day thematic workshop of Korean medicine to Šamorín.

Thematic workshop of Korean medicine

The workshop under the leadership of Dr. Pil-Gun Kim, K.M.D., PhD. and Jeong Yeonil, M.D. was held on 21st and 22nd October 2013 in a beautiful environment near Šamorín in Hotel Kormorán. On the first day, lecturers in detail explained principles of Korean medicine and out of its methods they highlighted pulse diagnostics. After the theoretical part, practical demonstrations of Korean traditional medicine followed, where

Reports

Report from the 17th Medical Congress of Natural Medicine with Interdisciplinary Participation
Magdaléna Miklósová, M.D.



lecturers showed different techniques of pinning while treating patients with kinetic mechanism malfunction – proving that they are masters of Korean medicine. Lectures of the last day were opened by Dr. Kim. After a brief historical overview of Korean medicine, Jeong Yeonil, M.D. continued with the tuition of Sa-Am and Sambu acupuncture. He explained the theoretical basics and the principles of Sambu acupuncture /the most detailed method of Sa-Am acupuncture/ in details. Finally he showed methods of this therapy on patients with kinetic mechanism malfunction. After the scientific program, Solár, M.D. thanked lecturers for the tuition of Korean medicine, which he evaluated very positively. Dr. Kim thanked participants for their interest, also Solár, M.D. and Solárová, M.P. for the warm welcome and hospitality. Finally, both lecturers took their farewell of every participant personally, one by one.

17th Medical Congress of Natural Medicine with Interdisciplinary Participation enriched me scientifically and socially as well. The main topics of the congress for me as an ophthalmologist were very interesting – as it was for every doctor who is interested in universal knowledge. Detailed information about water from different experts' points of views deepened my knowledge not only about water in my environment, but also of the aqueous humor. This – together with the latest information in acupuncture can help me treat my patients in a more complex way.

Congress of a similar character can be a huge contribution to every doctor's practice, this is why we can look forward to the 18th Medical Congress

of Natural Medicine with Interdisciplinary Participation.

Magdaléna Miklósová, M.D.

Ophtalmology, Galanta

e mail: mistefan@centrum.sk



Acupuncture and Natural Medicine Instructions for Authors

Acupuncture and Natural Medicine is an e-magazine of Medical Society of Natural Medicine (MSNM). Its main scope is the study of pathological changes in humans and the environmental and social influences on people from the standpoint of acupuncture. It publishes articles about acupuncture and other interdisciplinary fields involved.

The publisher enables the author to publish his or her unpublished works. Pursuant to provisions of Act no. 618/2003 Coll. (Copyright Act), the author waives his or her right to equitable compensation for such manuscript. The publisher does not return unsolicited contributions. The publisher sends an electronic contract to authors of studies.

E-magazine Acupuncture and Natural Medicine publishes 4 different types of contributions:

1. **studies** (3 standard pages and above- 1230 words) - original scientific work based on fundamental research
2. **surveys** (3 standard pages and above- 1230 words)- regarding current issues and problems in acupuncture and other interdisciplinary fields, informative articles and discussion
3. **reviews**- short informative reviews of up to 1 standard page
4. **reports** on scientific events – up to 10 lines, the title constitutes a part of the text

The form of studies and surveys:

- **Basic format:** MS Word, font Times New Roman, font size 12, double spaced, unaligned on the right edge, paragraph 5 strokes from the left, aligned to the left, no page numbering, refrain from word division;
- **The first page** contains the name of the study, the author's name and institution, abstract in Slovak language, respectively, in the language of the paper, max. 600 symbols (including spaces), Times New Roman font type with font size 11 points, 4-6 key words, phrases;
- **A summary** in English language below the study shall be present, approximately 10 lines (600 symbols including spaces) in lengths, including the author's name and address, or e-mail address;
- **Citations:** kindly include citations of less than 4 lines in double quotation marks inline, quotes exceeding 4 lines shall be divided into visually separate short paragraph absent of quotation marks, 5 strokes from the left, using Times New Roman font type size 11 points;
- For citation within citation, single quotes shall be used;
- Short bibliographic reference styled as (Bakoš 1966, 115) following a citation shall be used;
- citations originally in foreign language authentic and translated (inline or in the end note);

- Insert notes using MS Word feature (endnotes) to the very end of the text. Comments should be minimalistic and include information that cannot be written directly to the text;.
- **Bibliography** is mandatory, for formatting please kindly see examples.

Bibliography: (examples)

Monographies:

Bakoš, M.: *Vývin slovenského verša od školy štúrovej*, 3. vyd. Bratislava: VSAV, 1966.

If the citation is not from the original edition, a year of original edition should be stated:

Kundera, M.: *Žert*. (1969). Praha: Orbis, 2005.

If the citation is from a translated work, the original title and the year of its original edition should be stated:

Kristeva, J.: *Jazyk lásky* (La Revolution du langage poetique, Histories d'amour, 1974, 1983). Prel. J. Fulka. Praha: One Woman Press, 2004.

Almanacs:

Šišmišová, P. (ed.): *Translatologické štúdie. Teória, história a prax umeleckého prekladu v románskych krajinách*. Bratislava: Anapress, 2010.

Páleníková, J.— Šišmišová, P. (ed.): *Translatologické reflexie*. Bratislava: Anapress, 2010.

Contributions in a monograph or almanac:

Pašteková, S.: Premeny estetického kánonu a čitateľská pamäť. In Pašteková, S. — Podmaková, D. (ed.) *Kontinuita a diskontinuita vývinového procesu poézie, prózy a drámy. Premeny estetického kánonu. Konceptie literárnych dejín*. Bratislava: Veda, s. 116-122.

Magazines and periodical press:

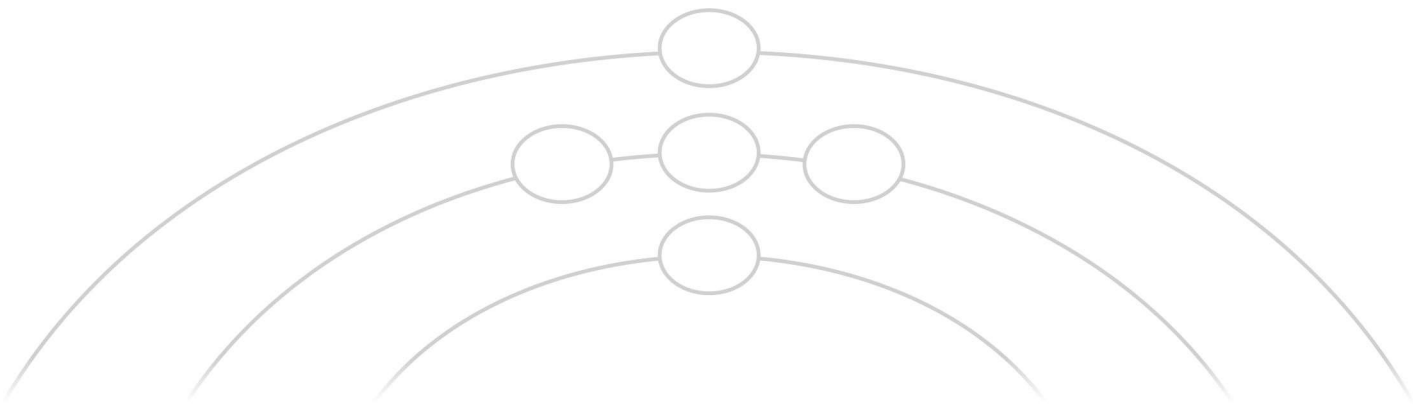
Dvořáková, A. — Žiaranová, R.: Utrpenie prekladateľa z druhej ruky. In *Revue svetovej literatúry*, roč. 20, 1984, č. 4, s. 95

Topol, J.: Prokletí nechtěných dětí. In *Lidové Noviny*, 10.4.2006, s. 6.

Citations of online publications:

Nouss, A.: Texte et traduction. Du sacre chez Jacques Derrida. <http://www.infoamerica.org/documentos_pdf/derrida03.pdf> [22.11.2010].

Tkačíková, D.: Když se řekne digitální knihovna... In *Ikaros* [online]. 8.3.1999. <http://ikaros.ff.cuni.cz/ikaros/1999/c08/usti/usti_tkacikova.htm>. [6.10.2000].



Also your advertisement could be here...

Acupuncture and Natural Medicine

